



CCPG

**SWAT – CCPG Joint Meeting
August 17, 2011**

CCPG Primary Transmission Participants



PLATTE RIVER
POWER AUTHORITY

Estes Park • Fort Collins • Longmont • Loveland



TRI-STATE

Generation and Transmission
Association, Inc.

A Touchstone Energy® Cooperative



Xcel Energy®

RESPONSIBLE BY NATURE™

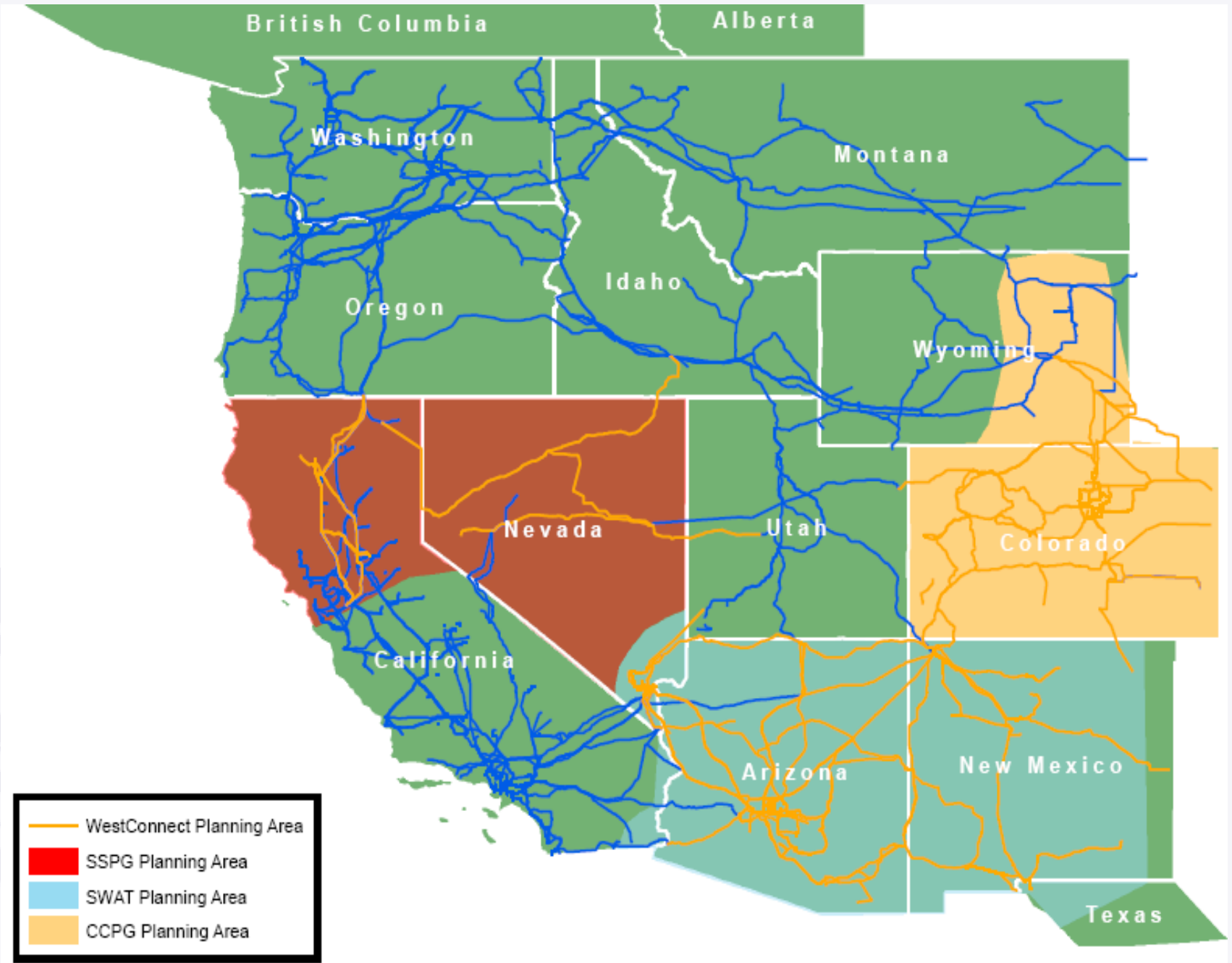


CCPG

- **Forum for joint transmission planning**
- **Recognized WECC Sub-Regional Planning Group**
- **4-5 Open Meetings/Year**
 - **February, April, August (Joint with SWAT/Sierra), December**
- **Denver TSGT Offices**
- **Open to All Interested Stakeholders**
- **Meeting Notices/Materials Posted at:**
 - **[WestConnect Website](#) and [WestConnect Transmission Planning - CCPG](#)**

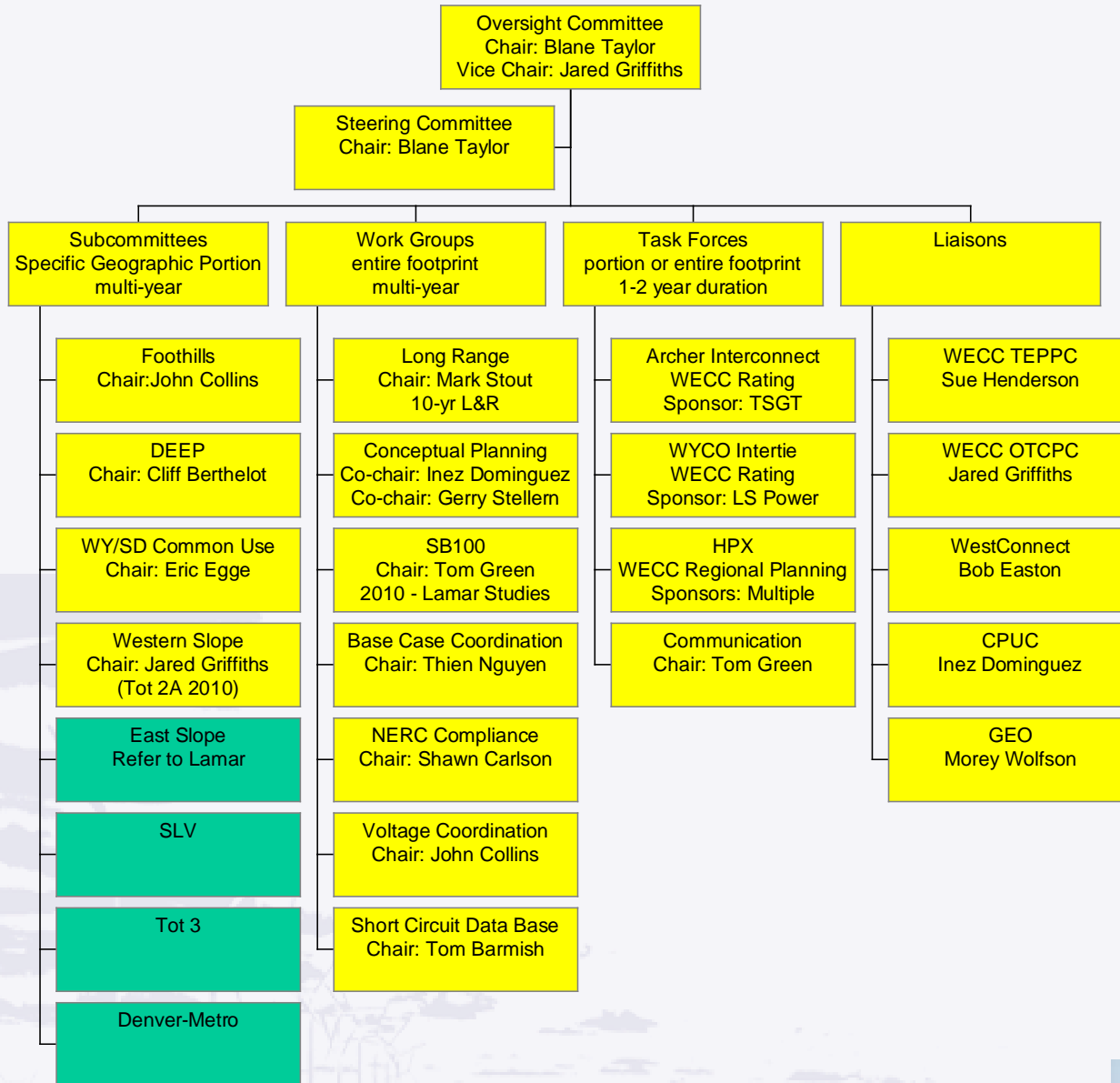


Map



Org Chart

2011 CCPG Organization Chart



CCPG Activities

➤ Chair

- Blane Taylor (Tri-State) 2011-2012

➤ Studies:

➤ Work Groups:

- ▶ Long Range (10-Year) Planning Study
- ▶ Conceptual (>10-year) Planning
- ▶ Senate Bill 100 Studies
- ▶ NERC Compliance (TPL Adequacy Study)
- ▶ WECC Data Coordination
- ▶ Voltage Coordination

➤ Subcommittee Studies (Geographic)

- ▶ Foothills, Western Slope, Denver-metro, etc.

➤ Regional Project Study Participation

- ▶ WCI, HPX, Tot 3 Expansion

➤ Regulatory Compliance

CCPG Activities

➤ 2010:

- WestConnect Annual Meeting
 - ▶ [WestConnect Draft Transmission plan](#)
- 10-Year Transmission Plan – Lamar Front Range
- Chair Appointment: Blane Taylor (Tri-State)

➤ 2011:

- Study Scope Kick-off January 26, 2011
- 2010 Study Plan Approval
 - ▶ [CCPG - Colorado Long-Range Transmission Planning Group | WestConnect](#)
- Colorado Transmission Planning Proposal- NOPR

CCPG 2010 Studies

- **SB100:**
 - Lamar – Front Range
- **CLRTPG (10-Year)**
- **CCPG - Colorado Long-Range Transmission Planning Group | WestConnect**
- **DEEP**
 - Douglas, Elbert, El Paso, Pueblo Counties
 - **DEEP Report**
- **Foothills**
 - **Foothill Planning Group Reports**
- **NERC Compliance**
- **Conceptual (Longer-Term)**
 - 20-30 Year Plan
 - 3 Resource Scenarios
 - **CCPG Conceptual Planning Group**
- **Archer Interconnect**



2011 Study Scopes – Work Groups

➤ **Work Group: Long Range Transmission Planning Group**

➤ **Purpose:**

- ▶ **Develop Coordinated 10 Year Transmission Plans**
- ▶ **Consider RPS & up to 30% Renewable**
- ▶ **Consider New PUC Rules**

➤ **Work Group: SB100**

➤ **Purpose:**

- ▶ **Meet requirements of Colorado Senate Bill 100**
- ▶ **Identify “Energy Resource Zones”**
- ▶ **Plan Transmission to Serve the ERZ’s**
- ▶ **File CPCN’s with CoPUC**

➤ **Work Group: Conceptual Planning**

➤ **Purpose:**

- ▶ **Develop Conceptual Transmission Plans beyond 10 Years**
- ▶ **Coordinated with Advisory Group**
- ▶ **3 Resource Scenarios Evaluated**
- ▶ **(1)Import/Export of 1000 MW, (2)Carbon Reduction, (3)High Load**



2011 Study Scopes – Work Groups

➤ Work Group: NERC Compliance

➤ Purpose:

- ▶ Help Meet NERC TPL-001,2,3,4 Requirements
- ▶ Steady State, Transient and Voltage Performance
- ▶ Near (5 year) & Far (10year) Windows
 - 2014LA, 2015HS, 2020HS
- ▶ Consider RPS & up to 30% Renewable

➤ Work Group: Area Coordination

➤ Purpose:

- ▶ Address Issues associated with preparation of cases for WECC Annual Study Program
- ▶ Rocky Mountain Area Coordinator

➤ Work Group: Voltage Coordination

➤ Purpose:

- ▶ Prepare Guidelines for System Modeling

➤ Work Group: Short Circuit Data Base

➤ Purpose:

- ▶ Prepare a Short Circuit Data Base



2011 Study Scopes (cont.)

➤ Subcommittees

➤ Purpose:

- ▶ Analyze transmission requirements for specific regions within the CCPG Footprint
- ▶ Foothills, DEEP, Tot 3, Wyoming Joint, Denver-Metro, SECO, SWCO, Front Range, etc
- ▶ **CCPG - Colorado Long-Range Transmission Planning Group | WestConnect**

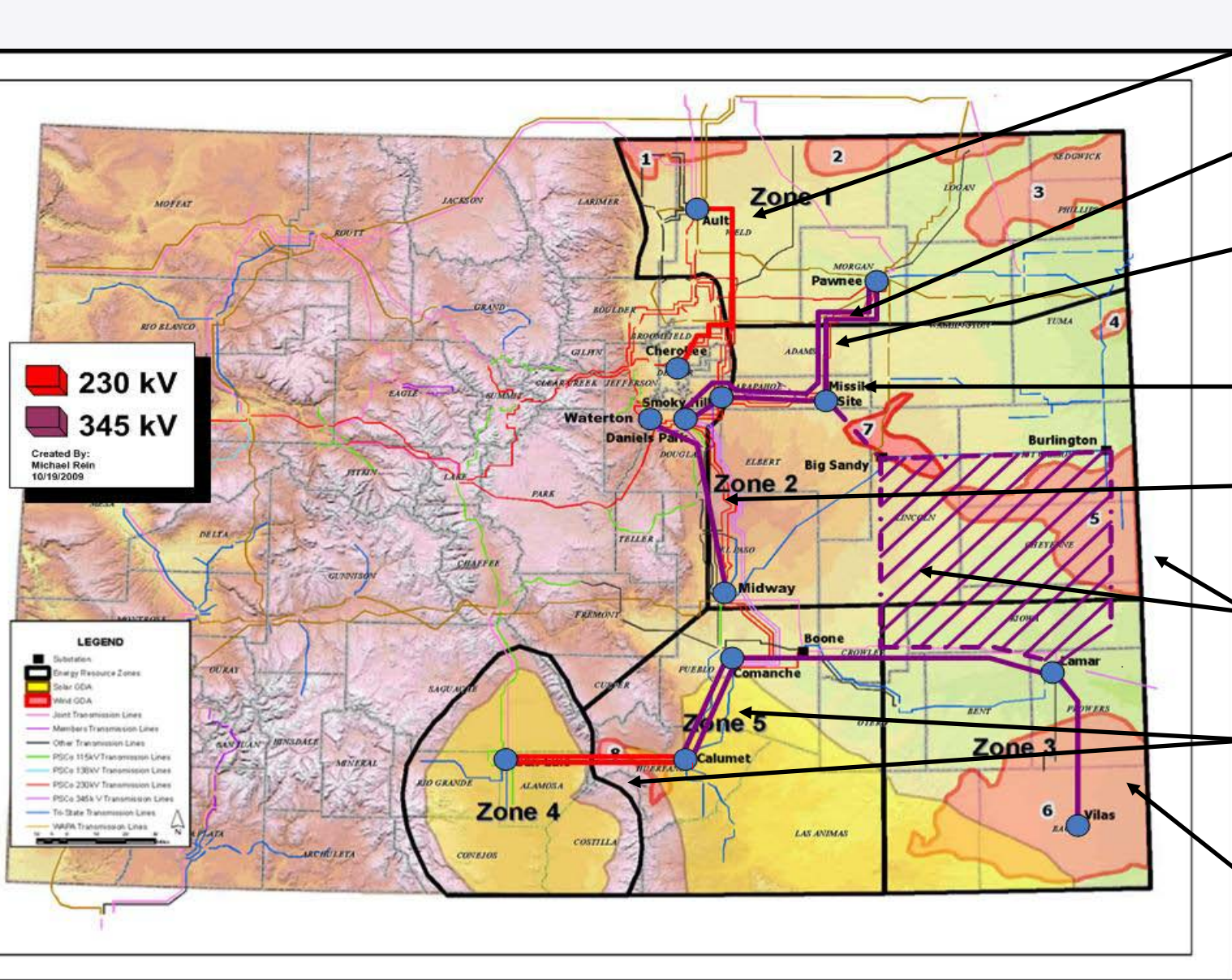
➤ Liaisons

➤ Purpose:

- ▶ Provide Information on Other Areas of Interest:
- ▶ OTC, TEPPC, PUC, GEO, etc.



SB-100 Transmission Plan



New Ault-Cherokee
230 kV ~ISD 2015

New Pawnee-Smoky
Hill 345 kV, ISD 2013

New Pawnee-Daniels
Park 345 kV -2nd
circuit ~ISD 2016

New Missile Site 230
kV ISD 2010) & 345 kV
(ISD 2013)

New Midway-Waterton
345 kV ~ISD 2011

New Lamar-
Comanche 345 kV &
Lamar - Missile Site
345 kV ISD 2016

New San Luis Valley-
Calumet-Comanche
230 & 345 kV lines ~
ISD 2013

New Lamar -Vilas 345
kV ISD 2016

Regional Project Task Forces

- **Tot 3 Archer Interconnection Project**
 - **Phase 2 Studies**
- **High Plains Express Initiative**
 - **Stage 2 of Feasibility Studies**
 - **WECC Regional Planning**
 - **Stakeholder Meeting April 2011**
 - **High Plains Express Transmission Project**

CPUC Rulemaking

Docket 10R-526E

Requires Regulated Utilities to File 10-Year Plan

- 10-Year Plan, 2-year cycle, starting Feb 2012
- 20-Year Plan, 2 year cycle, starting Feb 2014
- **Use CCPG as Forum**
 - Non-jurisdictional plans provided for information on utility maintained website
- **Stakeholder Participation**
 - actively solicit input from stakeholders, including government agencies, to identify alternative solutions
- **Reporting**
 - Methodologies, load forecasts, related studies & reports, transmission case data, stakeholder comments
- **All Facilities >100kV**
- **PUC will hold workshops and a consolidated hearing. Commission will render a decision regarding the accuracy of plans and process**
- **Transmission Planning Decision**
- **Transmission planning Recommended Rules**



Next

➤ Next CCPG meeting

➤ August 17-18, 2011 (Wednesday & Thursday); Tri-State Offices

➤ Notices/Materials Posted at: www.westconnect.com

➤ Contacts

Contact	Phone	Email
Blane Taylor (CCPG Chair)	303-254-6111	btaylor@tristategt.org
Jared Griffiths (CCPG Vice-Chair)	970-461-7603	jgriffit@wapa.gov
Thomas Green	303-571-7223	thomas.green@xcelenergy.com

