

WestConnect Joint Meeting

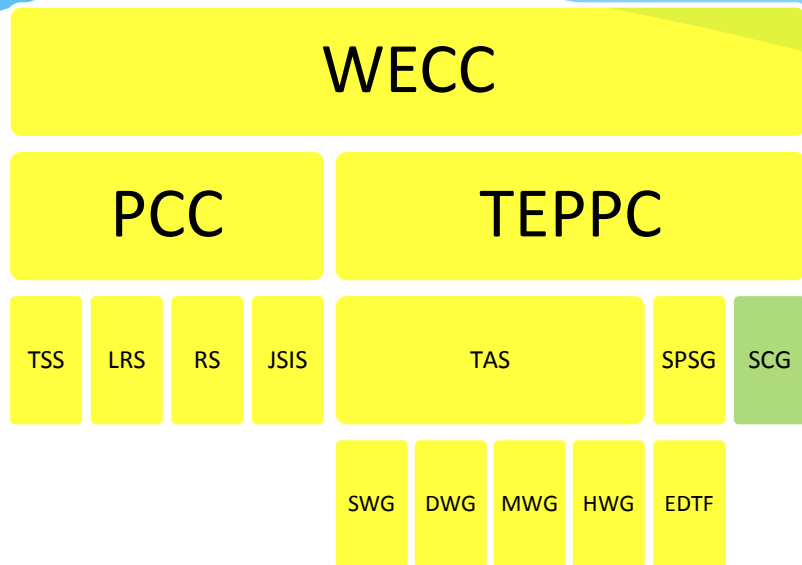
WECC ,TEPPC, and SCG Update on Interconnection Wide
Planning

August 17, 2011

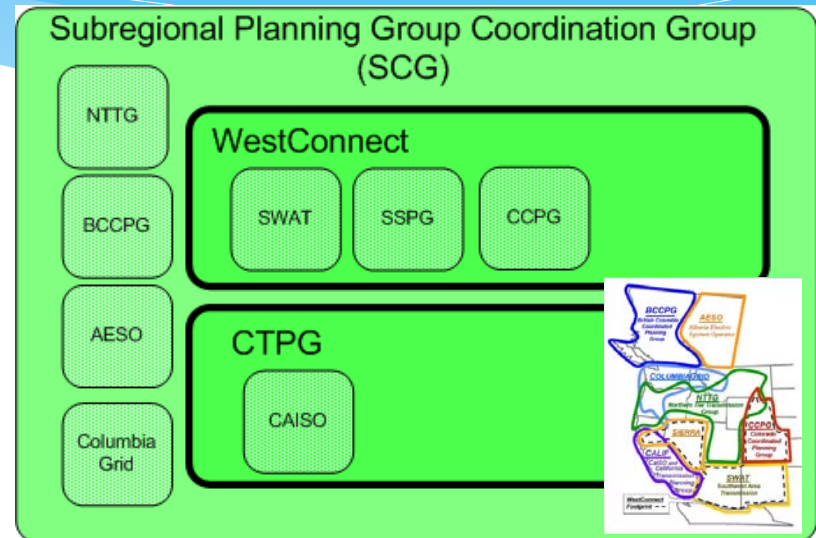
RTEP – Interconnection Plans

- * RTEP – Regional Transmission Expansion Planning
 - * Funded by the ARRA through the Department of Energy
 - * Managed by TEPPC with respect to the TEPPC protocol and charter ([Protocol and Charter](#))
 - * WECC received \$14.5 million to conduct interconnection-wide electric transmission planning studies
 - * Deliverables
 - * 10-Year plan – September 2011
 - * 10-Year and 20-Year plans – September 2013

Groups and Organization



WECC	Western Electricity Coordinating Council
PCC	Planning Coordination Committee
LRS	Loads and Resource Subcommittee
TSS	Technical Studies Subcommittee
RS	Reliability Subcommittee
JSIS	Joint Synchronized Information Subcommittee
TEPPC	Transmission Expansion Planning Policy Committee
TAS	Technical Advisory Subcommittee
DWG	Data Work Group
HWG	Historical Work Group
MWG	Modeling Work Group
SWG	Studies Work Group
SPSG	Scenario Planning Steering Group
EDTF	Environmental Data Task Force



SCG	Subregional Coordination Group
SPG	Subregional Planning Group
AESO	Alberta Energy System Operator
BCCPG	British Columbia Coordinating Planning Group
CAISO	California Independent System Operator
CCPG	Colorado Coordinating Planning Group
CTPG	California Transmission Planning Group
NTTG	Northern Tier Transmission Group
SSPG	Sierra Subregional Planning Group
SWAT	South West Area Transmission

Components to the Plan

The WECC 10-Year plan's objective is to "provide sufficient level of detail to inform decision-making processes regarding where and when to build new transmission" *



* Source: "10-year DRAFT Regional Transmission Plan Summary", WECC, July 18, 2011

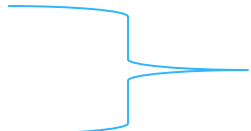
TEPPC Update

- * Released draft 10-year plan for public review
 - * [10-Year Plan Summary](#)
 - * **APPROVED by TEPPC 8/10/11**
 - * There are several sections to the entire report
 - * Summary
 - * 2019 Study Report
 - * 2020 Study Report
 - * EDTF Report
 - * WECC Path Reports
 - * The complete report will be submitted to DOE in September 2011 in electronic format only

What's in the Plan

- * Nine (9) Recommendations and Observations

- * Montana to Northwest (path 8)
- * Pacific Tie Paths (Paths 65 & 66)
- * Accessing additional renewable resources
- * Cost-effective remote renewable resources
- * Operational Impacts of variable generation
- * Planning cooperation
- * Environmental and cultural considerations in the planning process
- * Water resource impacts on the future generation mix
- * Future region transmission planning processes



Will be
combined and
moved to first
observation

What's *not* in the Plan

- * Selection of individual of projects
- * Cost Allocation
- * Siting and Permitting

Scenario Planning Steering Group (SPSC)

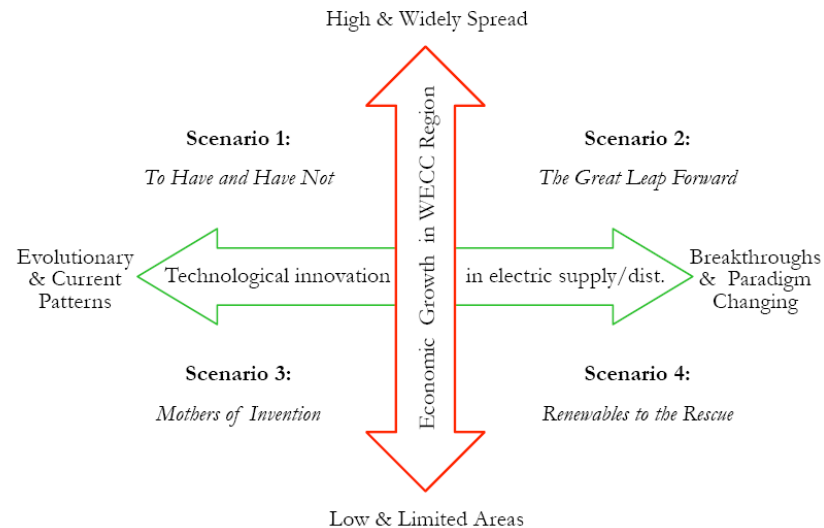
- * New members

- * Carl Linvill – Technology Advocate
- * Rebecca Wagner – State Official (Nevada)
- * John Savage – TEPPC State Official (Oregon)
- * Jason Marks – State Official (New Mexico)
- * Henry Tilghman – Technology Advocate
- * John Stensgar – Tribal Representative

SPSG Scenarios

- * New technical consultant – Reos
- * Scenarios to be used in the 20-year long term planning tools
- * Four (4) scenarios released for review (in draft form)
 - * Selected two main drivers from 10 that *simultaneously* are most uncertain and most important

Chart 3: WECC Transmission Scenario Matrix



Website Link:

[WECC Scenarios 2011](#)

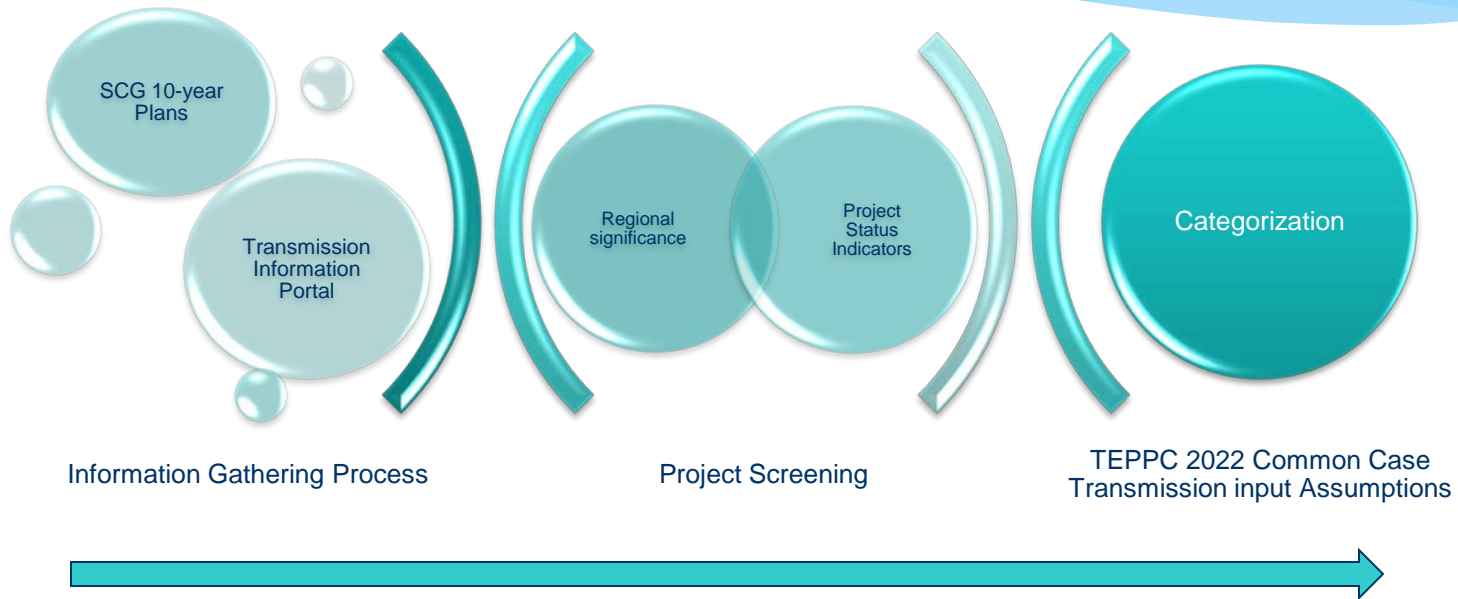
Environmental Data Taskforce (EDTF)

- * Technical Consultant – ICF International
- * Purpose – To incorporate environmental and cultural considerations into the transmission planning process
- * Report Approved by SPSG – May 24, 2011
 - * Included in electronic 10-Year plan
- * Recommendations
 - * Use catalog of preferred GIS datasets
 - * Use of classification of land areas
 - * Explore existing data and methodologies on the economic values of environmental and cultural resources
 - * Amend TEPPC Planning Protocol to incorporate risk comparison of future transmission alternatives
 - * Conduct regular outreach, beyond RTEP stakeholder
 - * [EDTF Recommendation Report](#)

SPG Coordination Group (SCG)

- * Ad-hoc group to foster coordination between SPGs and assist WECC with interconnection wide planning
- * Delivered Foundational Project Transmission List to TEPPC in 2010, used in 2020 case studies
- * In the process of revising and renaming the project list for the 2022 TEPPC studies
 - * New name – “TEPPC 2022 common case transmission input assumptions” (CCTIA)
 - * Robust document, transparent process, modified methodology
- * Start discussions on FERC Order 1000

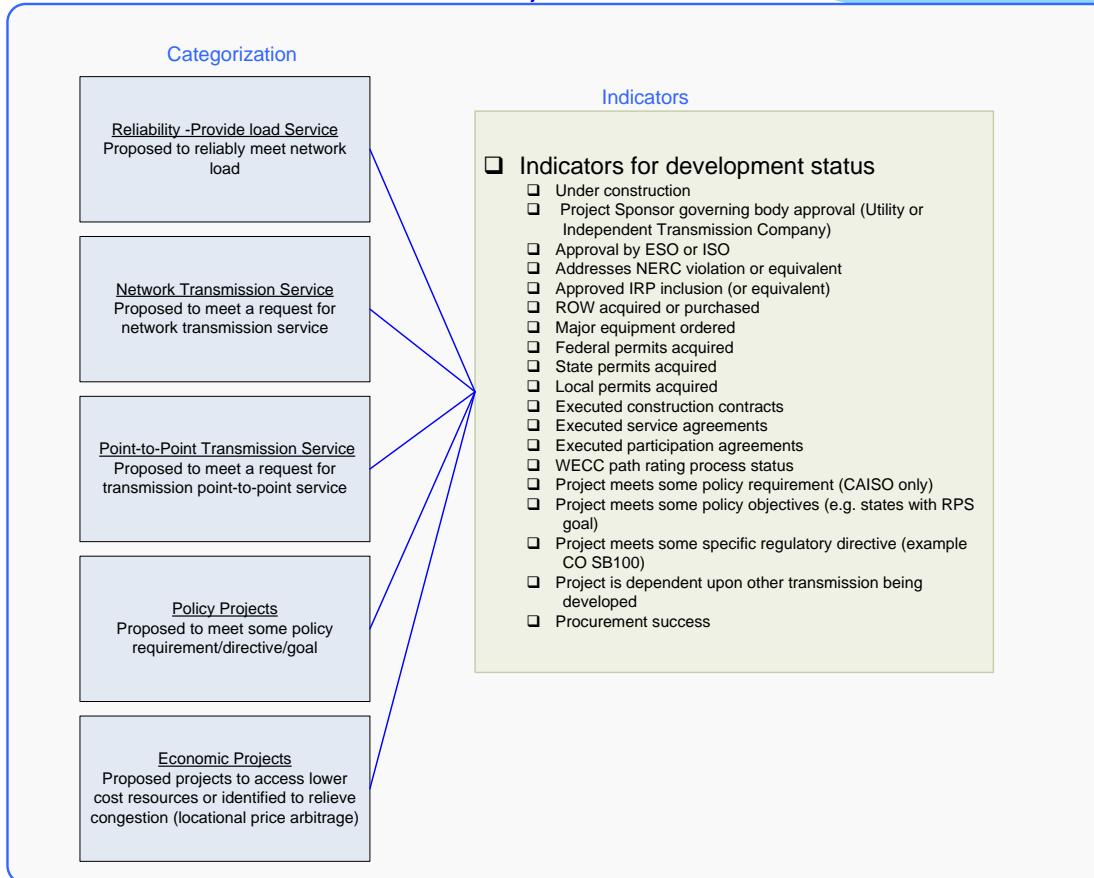
Process and Methodology



Source: "SCG Foundational List Webinar- Stakeholder Outreach", SCG, July 13, 2011

Project Indicators and Categorization

Foundational Project Criteria



All categories should have indicators that reflect both financial and implementation development status

Website Link

[First Review of 2022 Transmission List Projects](#)

Important Dates

- * TEPPC & SPSG Meeting – August 9th – 10th
 - * Next in-person meeting – November 2nd-3rd location TBD
- * SCG – Meeting on August 15th-16th in Denver
 - * Project List due to TEPPC August 31st
- * EDTF – Meeting on August 18th on webinar
 - * Next in-person October 11, 2011 in Denver
- * WECC BOD – September 19th-21st in Salt Lake City
 - * Approval item: WECC 10-Year plan

Alphabet Soup

- * ARRA – America Recovery and Reinvestment Act
- * CCTIA – 2022 TEPPC common case transmission input assumptions
- * DOE – Department of Energy
- * EDTF – Environmental Data Task Force
- * GIS – Geographic Information System
- * SCG- SPG Coordination Group
- * SPG – Subregional Planning Group
- * SPSG- Scenario Planning Steering Group
- * TEPPC – Transmission Expansion Planning Policy Committee
- * WECC – Western Electricity Coordinating Council

Questions?

- * Contact Information
 - * Susan Henderson
 - * Susan.f.henderson@xcelenergy.com
 - * 303-571-7575