



Wyoming-Colorado Intertie Project

A Public/Private Partnership

Jerry Vaninetti, Vice President Western Development
Trans-Elect Development Company LLC

October 31-November 1, 2007
WestConnect Planning Workshop
Sparks, NV

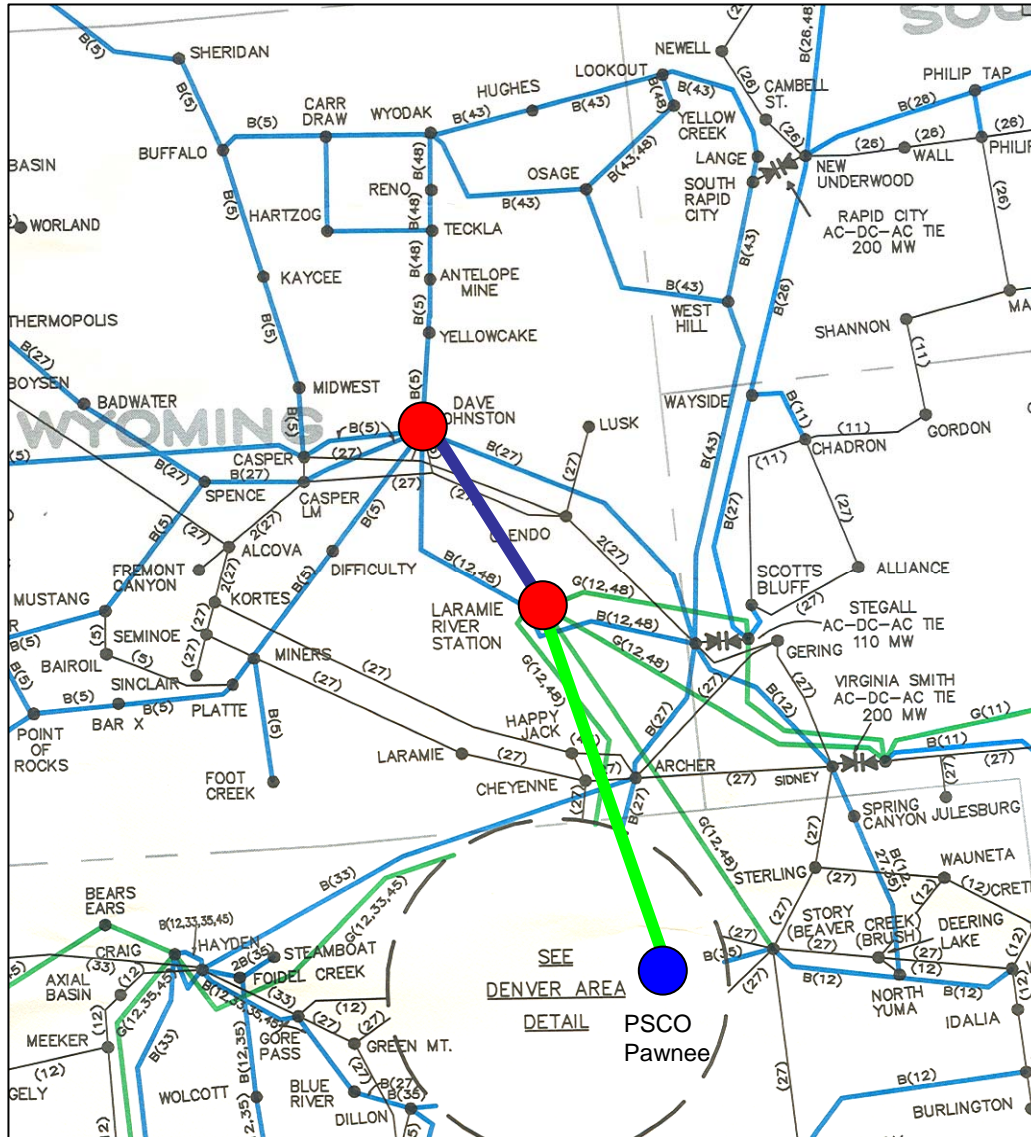


WCI (TOT3) Project Segments

- Injection Point
- Delivery Point

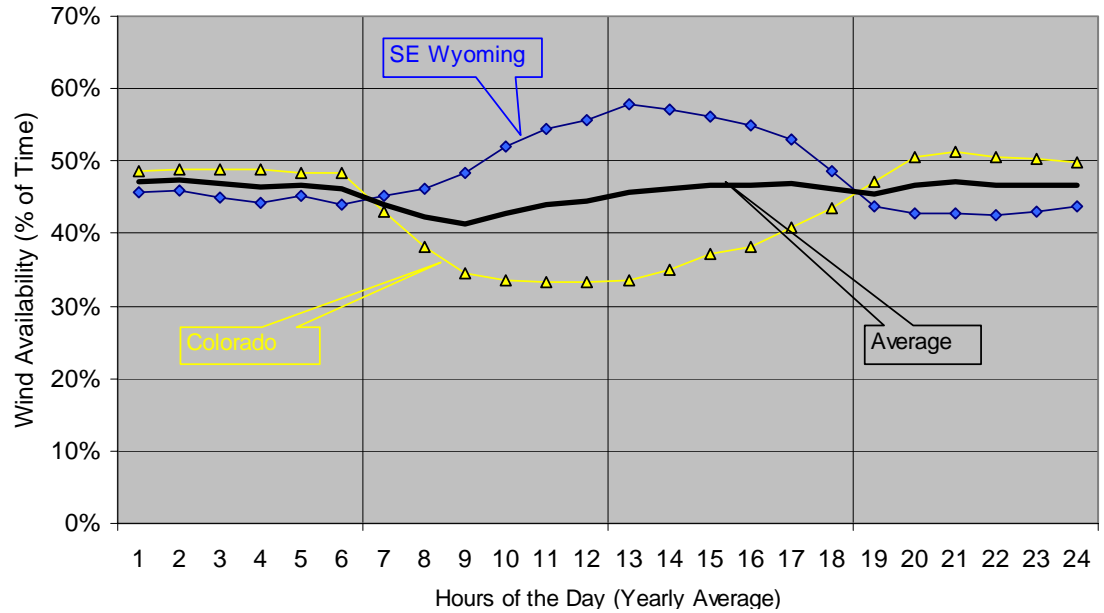
Transmission Lines

- 345 kV —
- 230 kV —



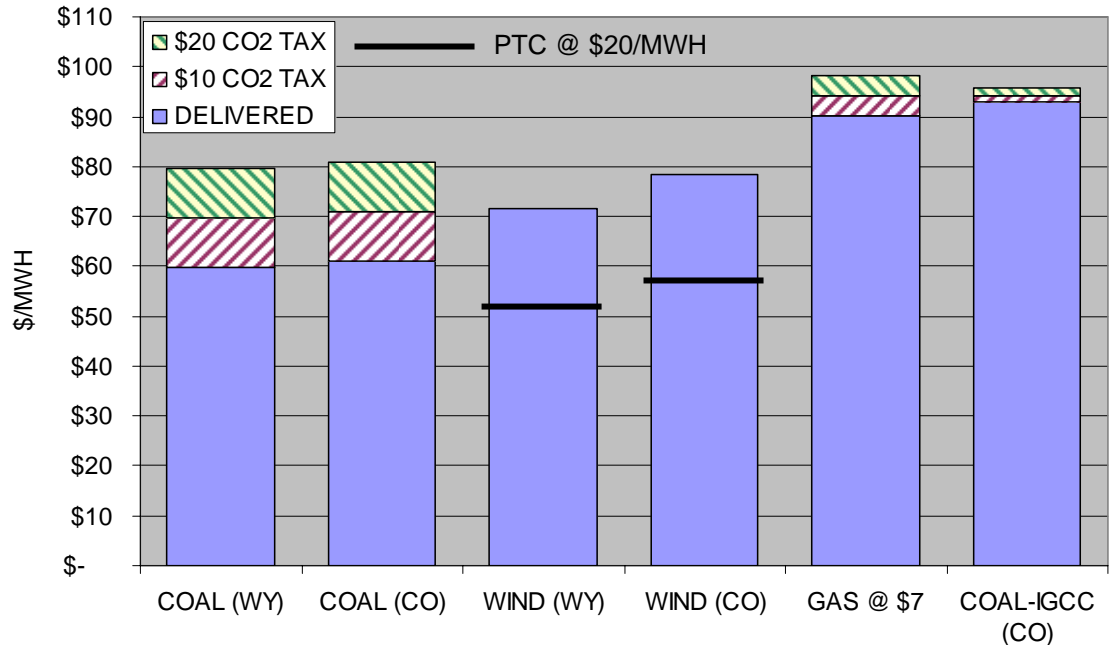
CO-WY Wind Blend

- Firming wind with wind
- Reducing wind's intermittence
- Reduced integration costs



Front Range Economics

- Wind is cost-effective
- CO2 taxes & PTCs enhance wind economics



WCI Project Update

- Feasibility studies complete
 - Consultants: Power flows, corridors, design, costs, permitting & ROW
 - Economic feasibility demonstrated
 - Expected 2013 on-line date
- Phase 1 WECC path rating process completed
 - Regional Planning Report accepted August 31, 2007
 - Phase II Status granted October 3, 2007
- Open Season “auction” planned for Feb-08
 - Charles River Associates retained to manage auction & evaluate bids
 - Likelihood of a primarily-wind project
 - Expectation of both LSE and wind generation developer bidders
 - Segments to be offered & indicative rates (\$2007):
 - LRS-Pawnee 900 MW @ \$3.50/kw-mo
 - DJ-Pawnee 450 MW @ \$5.00/kw-mo
- Potential for WCI to be initial building block to High Plains Express
- Public support continues to build, particularly in the wind community
- Project Website launched: www.wyia.org/wci