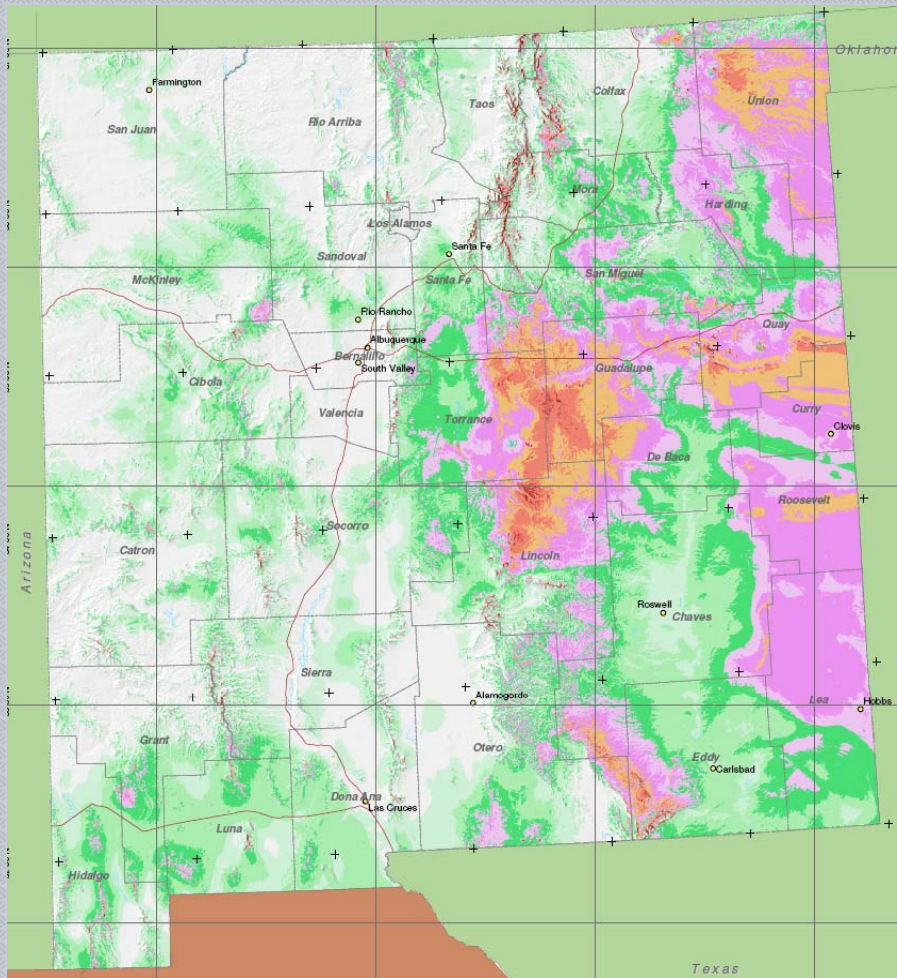


NEW MEXICO WIND RESOURCES ARE REMOTE



★ Remote location of renewable wind energy in New Mexico requires installation of long-distance transmission lines in order to supply power to western load centers.

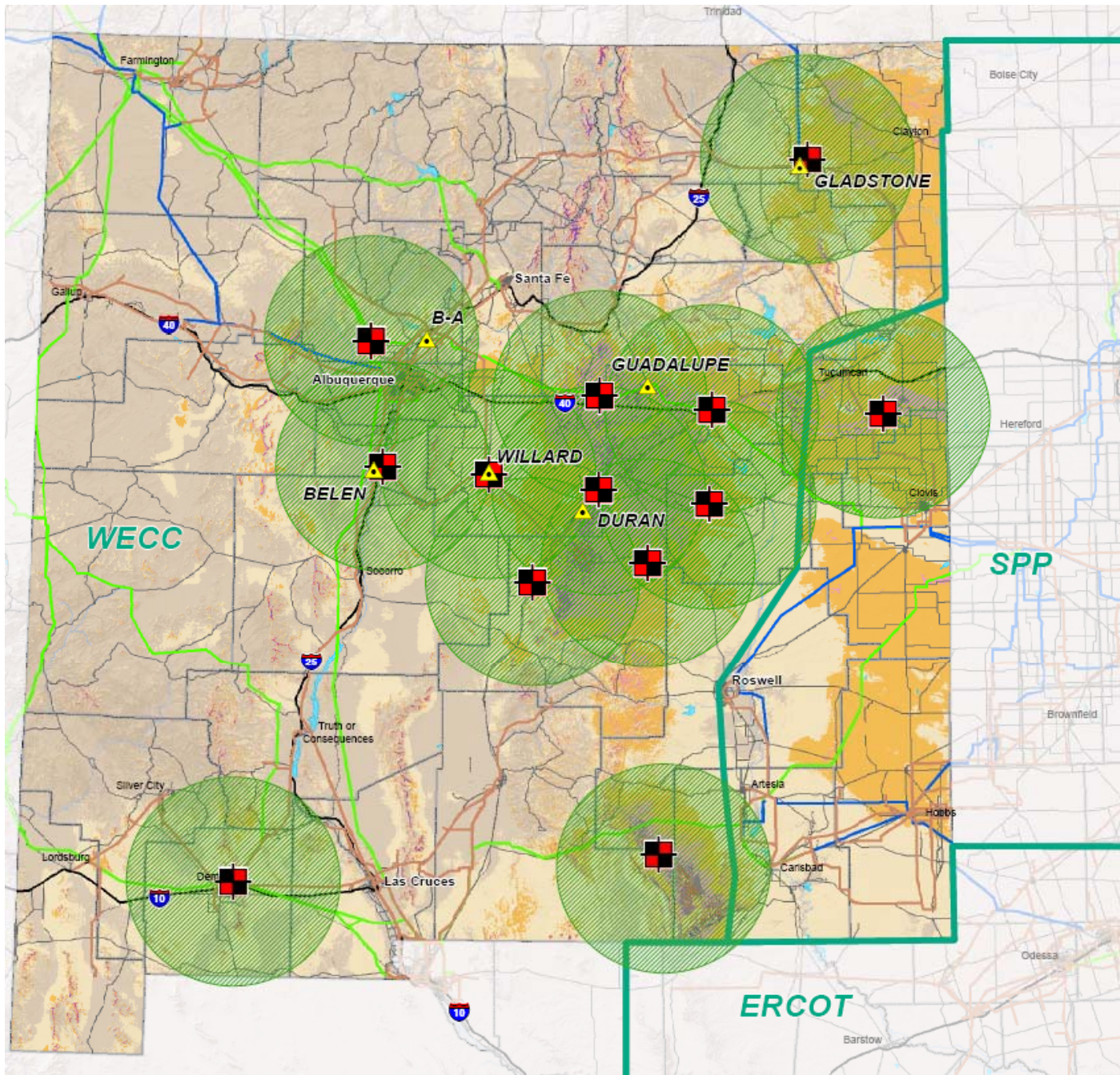
Mean Speed at 70 m			
mph	m/s		
< 12.3	< 5.5		15.7 - 16.8 7.0 - 7.5
12.3 - 13.4	5.5 - 6.0		16.8 - 17.9 7.5 - 8.0
13.4 - 14.5	6.0 - 6.5		17.9 - 19.0 8.0 - 8.5
14.5 - 15.7	6.5 - 7.0		19.0 - 20.1 8.5 - 9.0
			20.1 - 21.3 9.0 - 9.5
			> 21.3 > 9.5



SunZia



SUNZIA SOUTHWEST TRANSMISSION PROJECT



New Mexico Collector System Concept

LEGEND

- Existing Substation
- Conceptual Collector Station
- 345 kV Transmission Line
- 230 kV Transmission Line
- 115/138 kV Transmission Line
- Generation Zones
- NERC Region Boundary

Wind Resources

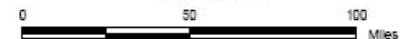
- 1 - Poor (0.0 - 12.5)
- 2 - Marginal (12.5 - 14.3)
- 3 - Fair (14.3 - 15.7)
- 4 - Good (15.7 - 16.8)
- 5 - Excellent (16.8 - 17.9)
- 6 - Outstanding (17.9 - 19.7)
- 7 - Superb (> 19.7)

Sources: BLM 2008; EPG, Inc. 2008; ESRI 2008; NREL 2008; USGS

Project Location



1 inch = 18 miles



Note - Station and transmission line locations are schematic and do not represent precise

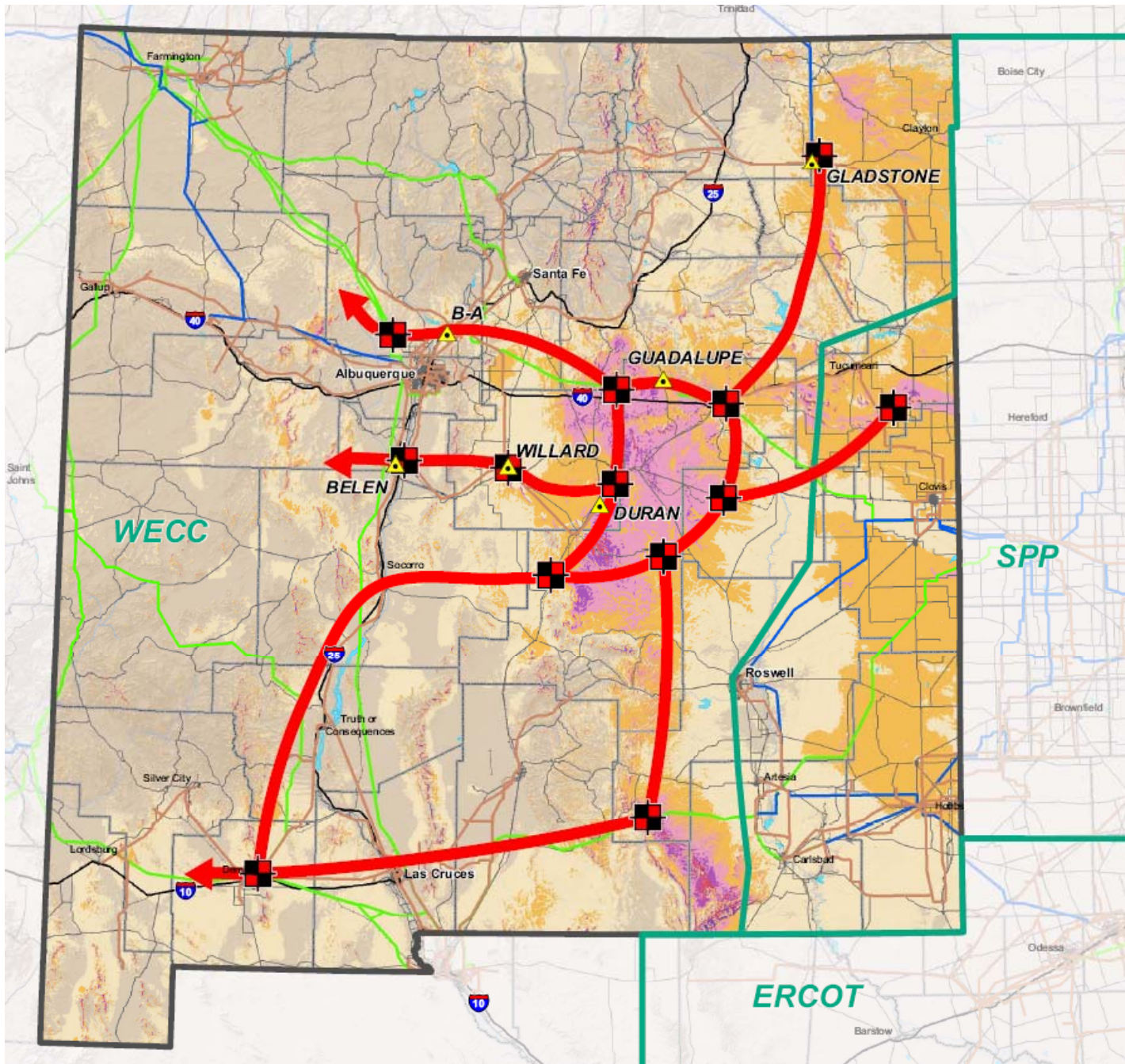
February 16, 2009



SunZia



SUNZIA SOUTHWEST TRANSMISSION PROJECT



New Mexico Collector System Concept

- Existing Substation
- Conceptual Collector Station
- Conceptual Collector Transmission Line
- 345 kV Transmission Line
- 230 kV Transmission Line
- 115/138 kV Transmission Line
- NERC Region Boundary
- Wind Resources**
 - 1 - Poor (0.0 - 12.5)
 - 2 - Marginal (12.5 - 14.3)
 - 3 - Fair (14.3 - 15.7)
 - 4 - Good (15.7 - 16.8)
 - 5 - Excellent (16.8 - 17.9)
 - 6 - Outstanding (17.9 - 19.7)
 - 7 - Superb (> 19.7)

**PRELIMINARY AND CONCEPTUAL:
FOR DISCUSSION PURPOSES ONLY**

**DRAFT DEVELOPED BY:
SUNZIA SOUTHWEST
TRANSMISSION PROJECT**

Sources: BLM 2008; EPG, Inc. 2008; ESRI 2008; NREL 2008; USGS



NOTE: SUNZIA AND TRANSMISSION LINE LOCATIONS ARE APPROXIMATE AND NOT TO SCALE.

December 12, 2008



SunZia



SUNZIA SOUTHWEST TRANSMISSION PROJECT