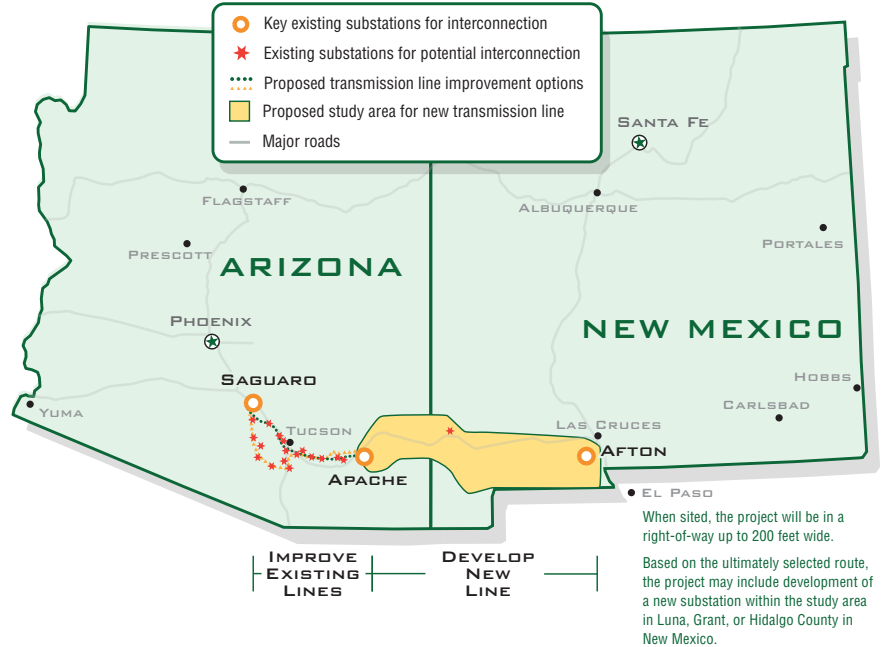


WHAT IS THE SOUTHLINE TRANSMISSION PROJECT?

The Southline Transmission Project is a proposed transmission line designed to collect and transmit electricity across southern New Mexico and southern Arizona, bringing electric system benefits to the Desert Southwest, one of America's fastest-growing regions. The Southline Transmission Project is being designed to minimize land and resource impacts by selecting a route along existing corridors such as abandoned rail lines, and by improving existing transmission lines where feasible – an innovative approach that respects the region's communities and natural and cultural resources. The project will consist of two segments:

- A new **225-mile, 345 kilovolt (kV) double-circuit transmission line** between the existing substations at Afton (NM) and Apache (AZ)
- A series of improvements to **approximately 130 miles of existing transmission lines** between the Apache (AZ) and Saguaro (AZ) substations.



WHY IS THE SOUTHLINE TRANSMISSION PROJECT NEEDED?

- **To sustain growth** – The Desert Southwest is expected to experience substantial long-term growth, creating increased demand for energy.
- **To ensure reliability** – There are limited existing electrical connections in the area and many older lines that are approaching the end of their useful lives, raising reliability risks.
- **To relieve congestion** – Additional transmission capacity in the region is needed to help local utilities increase access to the most cost-efficient energy sources.
- **To provide renewable energy** – Satisfying the renewable energy requirements of western states requires access to and economic transmission of renewable resources; a major challenge facing renewable energy development is insufficient transmission access.

WHAT BENEFITS DOES THE SOUTHLINE TRANSMISSION PROJECT BRING?

- **Cost-effective, reliable electricity** – By interconnecting with more than 10 substations along its route, the Southline Transmission Project will enable local utilities to meet energy demands.
- **Local economic development** – The Southline Transmission Project will facilitate local economic development through project construction, enhanced power reliability, and by enabling additional local renewable energy development.
- **Resource conservation** – Working from federal and state energy and land use planning efforts, using existing infrastructure, and developing a route along existing infrastructure corridors will minimize land use conflicts.
- **Renewable energy** – The Southline Transmission Project will enable renewable energy projects to connect to the electric system, helping states in the Desert Southwest meet renewable energy requirements.
- **Smart, coordinated approach** – The Southline Transmission Project team has worked closely with local utilities and other transmission providers since 2009 to ensure the Southline Transmission Project meets local needs and improves the region's electric system.

SUMMER - FALL
2011

Public engagement and outreach, including public workshops to develop routing alternatives

2011 - 2012

Federal, state, and local permitting processes

2013 - 2014

Right-of-way acquisition, procurement, and construction

2015

Targeted in-service date

WE LOOK FORWARD TO WORKING WITH YOU

As part of our planning process, we will be holding public workshops on routing alternatives. We strive to respond rapidly to all inquiries, including requests for meetings and presentations. Please visit our website to sign up for updates and to access the latest information.