



Pinal County Projects

presented by

Jim Burson

Southwest Transmission Cooperative, Inc.

San Manuel Interconnection Project

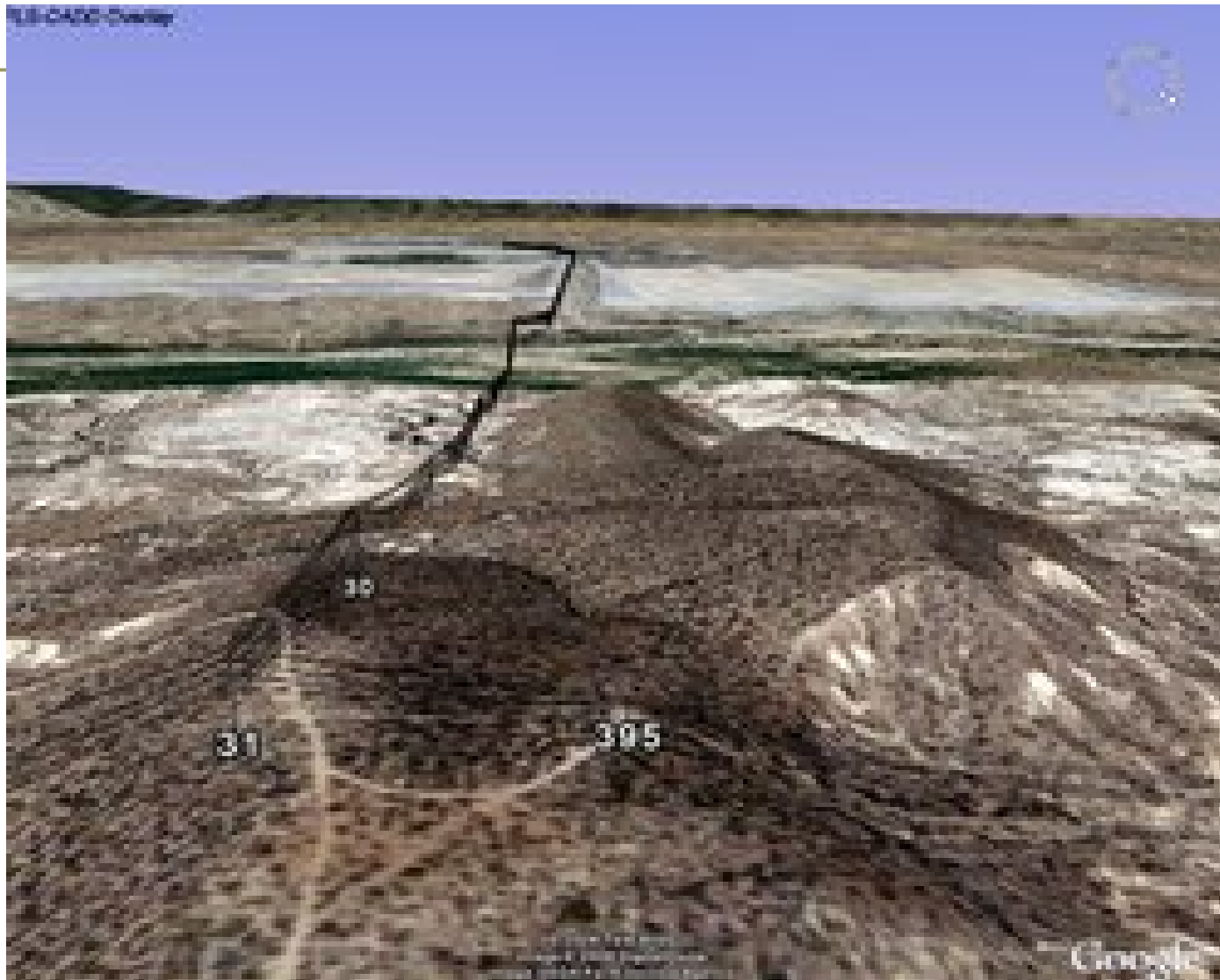
(approximately 4.5 miles)



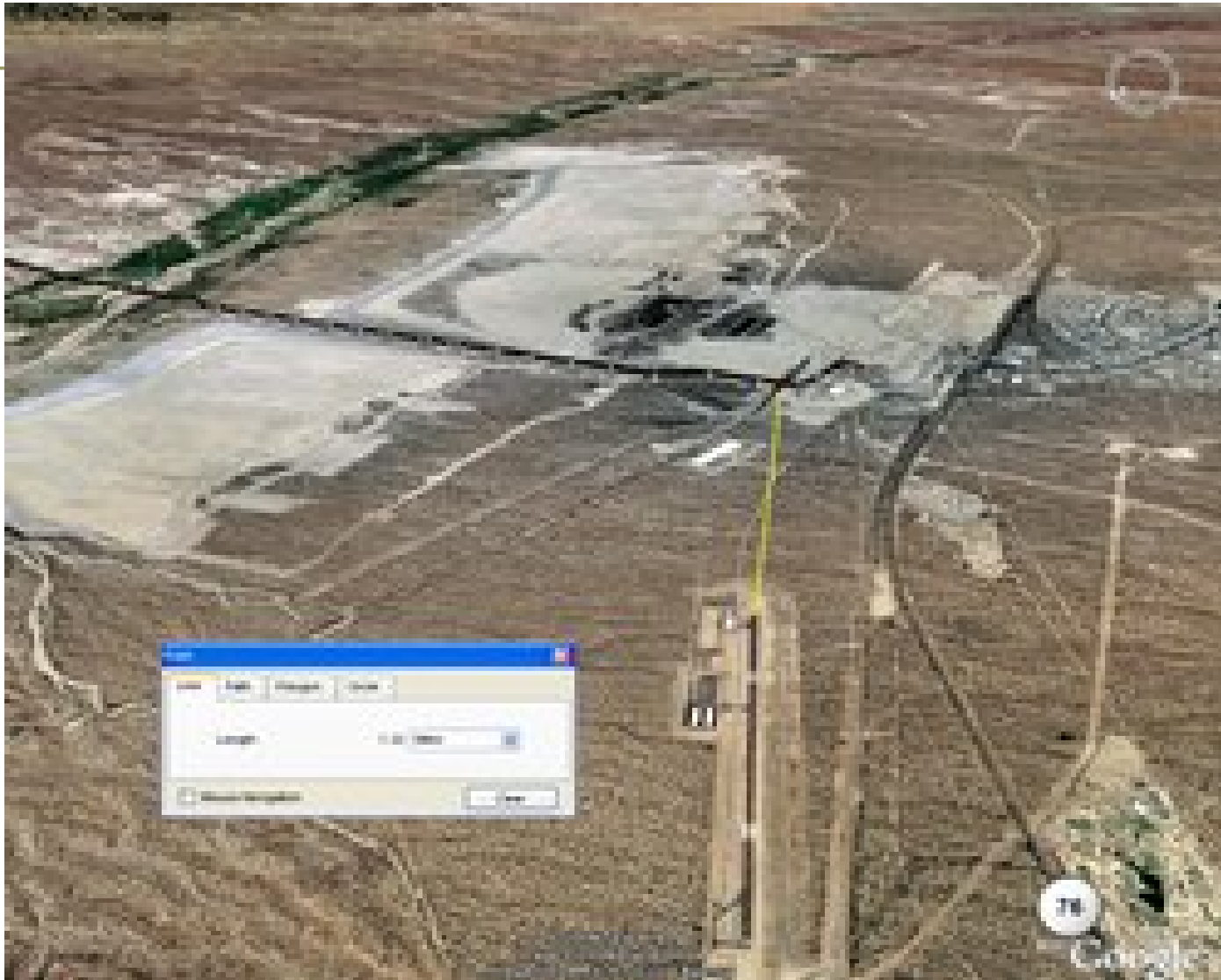
Proposed Route From San Manuel Substation



Proposed Route From Apache/Hayden Line

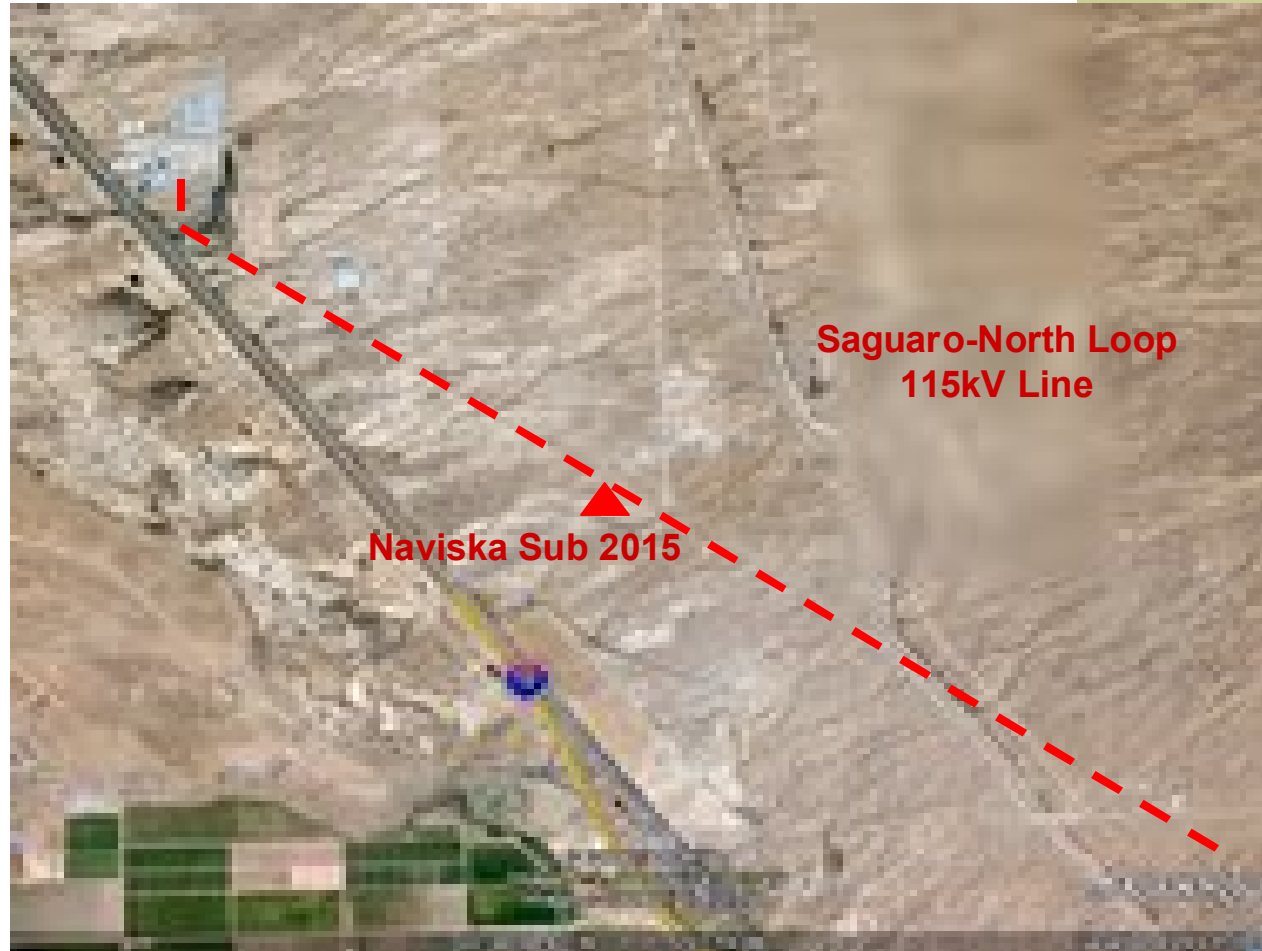


San Manuel Interconnection Project



Saguaro-North Loop 115kV Transmission Line Project

(approximately 16 miles, with 5.4 miles in Pinal County)



Leaving Saguaro Substation



Saguaro-Tortolita Section



Proposed Naviska Substation 2015

