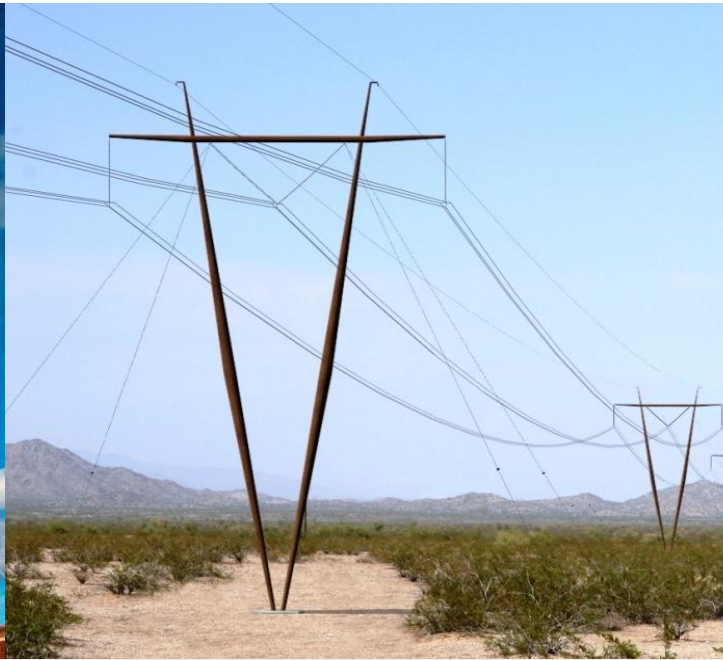


# SUNZIA SOUTHWEST TRANSMISSION PROJECT

UPDATE FOR THE

## SWAT OVERSIGHT COMMITTEE



**TOM WRAY**  
**PROJECT MANAGER**

**MAY 10, 2011**

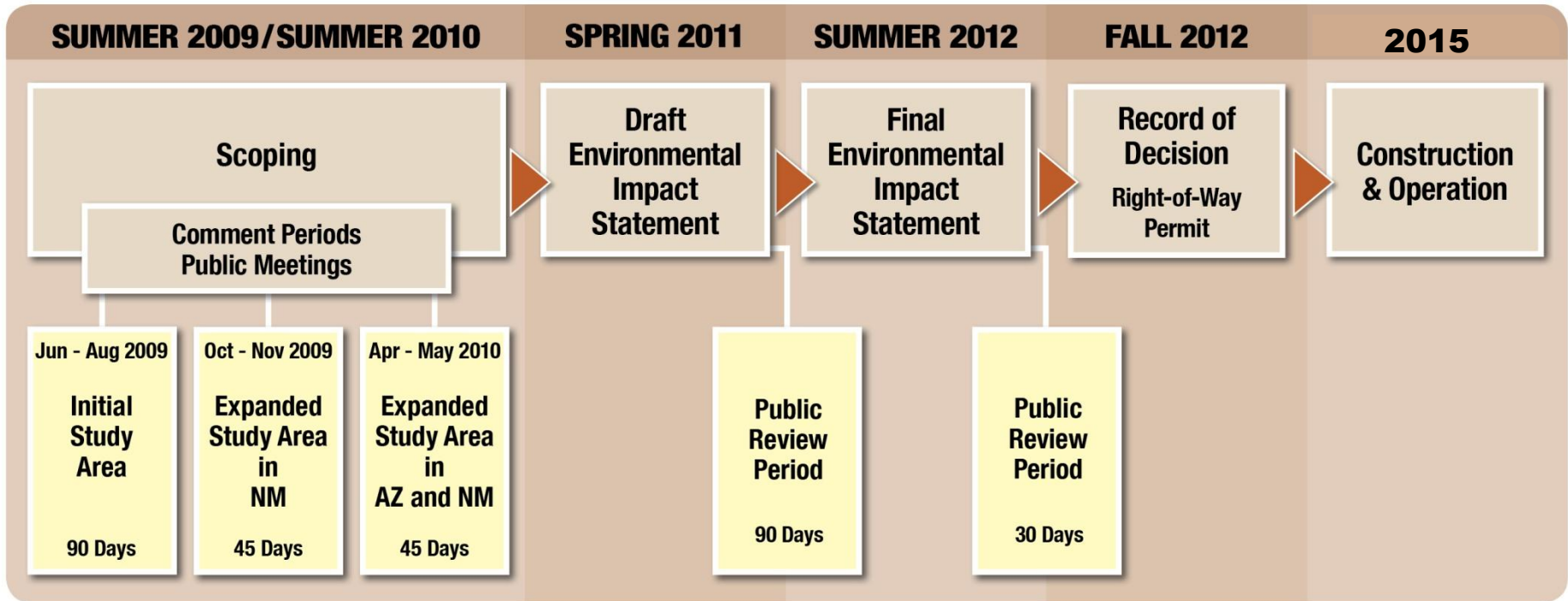
# WECC 3 PHASE RATING PROCESS

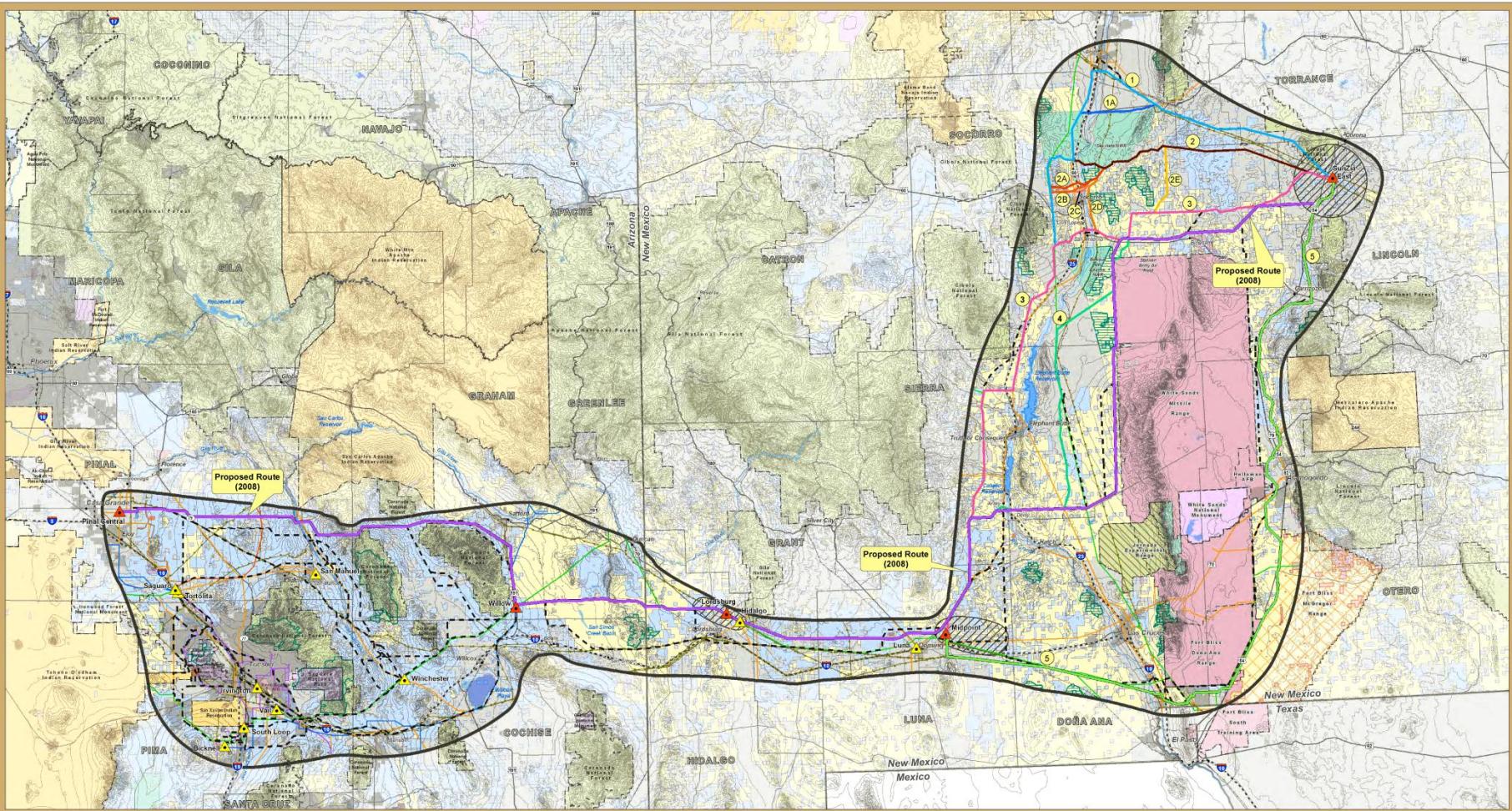
---

- ★ February 22, 2011: Phase 2 Rating Study Report was submitted to WECC
- ★ No comments were received during the 30-day review period
- ★ March 25, 2011: WECC granted Phase 3 Status with an **Accepted Rating of 3,000 MW** for two 500 kV AC lines

# EIS SCHEDULE

## PROJECT TIMELINE





**SunZia Southwest Transmission Project**

**Land Ownership and Jurisdiction**



**LEGEND**

**Land Ownership**

- |                           |                                |
|---------------------------|--------------------------------|
| Bureau of Land Management | U.S. Fish and Wildlife Service |
| U.S. Dept. of Defense     | U.S. Bureau of Reclamation     |
| McGregor Range Withdrawal | Indian Reservation             |
| National Park Service     | State Trust Land               |
| U.S.D.A. Forest Service   | Local or State Parks           |
| U.S.D.A. Other            | Private/Other                  |

**Base Features**

**Project Features**

- |                                       |                         |
|---------------------------------------|-------------------------|
| SunZia Proposed Route - Sept. 8, 2008 | Study Area - April 2010 |
| Alternative Route Segments            | Substation Siting Area  |

**Alternative Routes - Midpoint to SunZia East**

- |    |    |   |
|----|----|---|
| 1  | 2B | 3 |
| 1A | 2C | 4 |
| 2  | 2D | 5 |
| 2A | 2E |   |

**Utilities**

- |                         |                               |
|-------------------------|-------------------------------|
| Proposed Substation     | 500kV Transmission Line       |
| Existing Substation     | 345kV Transmission Line       |
| Pipeline (Diameter 6"+) | 230kV Transmission Line       |
|                         | 138kV/161kV Transmission Line |
|                         | 115kV Transmission Line       |

**Reference Features**

- |                |               |                             |
|----------------|---------------|-----------------------------|
| City           | State Highway | County Boundary             |
| River/Stream   | U.S. Highway  | State Boundary              |
| Lake/Reservoir | Interstate    | Jurisdictional Boundary     |
| Urban Area     | Railroad      | Wilderness Area             |
|                |               | Wilderness Study Area (WSA) |

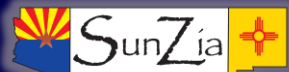
**Sources:**

- AZ BLM 2009
- AZ State Land Department and ALRIS 2008
- ESRI StreetMap 2008, Mimbres RMP 1989
- NM BLM 2009, Socorro PRMP 2009
- Tri-County RMP 2009
- POWERmap, powermap.platts.com
- ©2009 Platts, a Division of the McGraw-Hill Companies
- USGS, EPO, Inc. 2010



Contour Interval 200 feet

May 12, 2010





[WWW.SUNZIA.NET](http://www.sunzia.net)