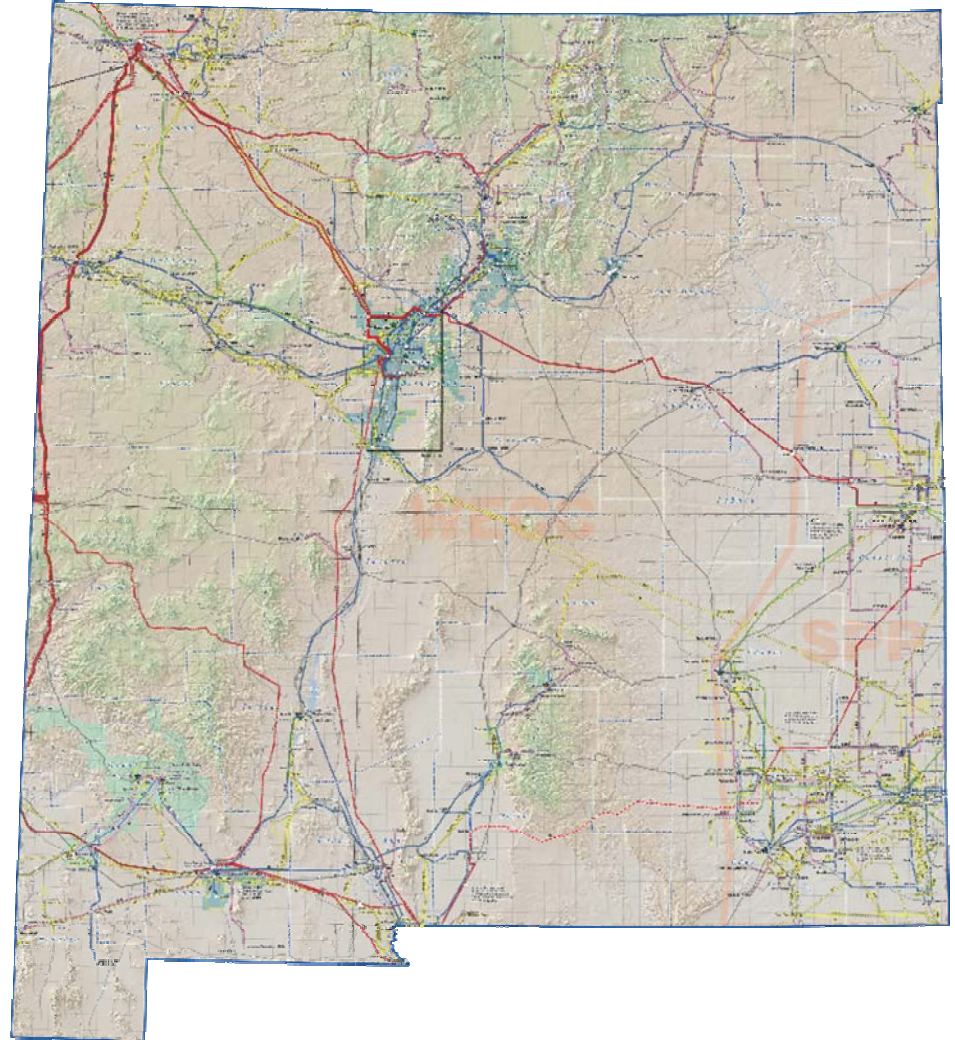




NM Subgroup

SWAT New Mexico Subgroup

➤ Central NM Wind Collector System (Conceptual)



Prepared
By



WestConnect Workshop
Oct 31/Nov 1, 2007, Reno, NV



NM Subgroup

Update

- **Attempt to provide the marketplace better information than current queue process.**
- **Cost –\$670M for 2400 MW**
- **Limiting conditions noted**
- **http://www.oatioasis.com/PNM/PNMdocs/New_Mexico_Transmission_Expansion_For_Wind_Resources.pdf**

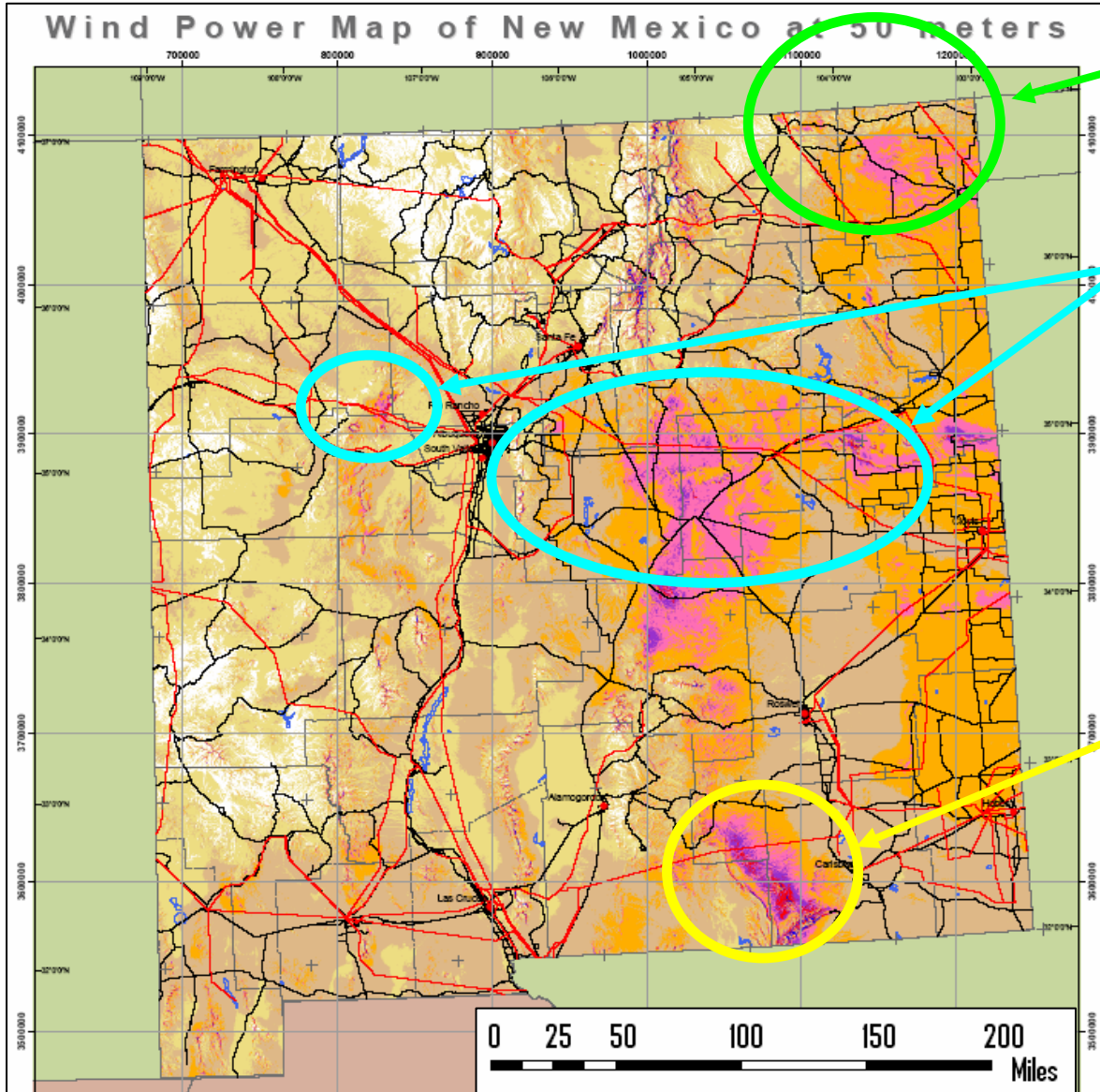
Prepared
By





NM Subgroup

Wind Generation Areas



TSGT

1520 MW total

PNM

3460 MW total

EPE

500 MW total

Grand Total

5480 MW



Price List for Estimates

NM Subgroup

Component	Cost	Note
345 kV line, single circuit	\$ 1.0 M /mi	Rural ROW
345 kV line, double circuit	\$ 1.5 M /mi	Rural ROW
345/115 440 MVA transformer	\$ 11.0 M	
345 kV line reactor	\$ 1.0 M	Required if line >70 mi
Greenfield 345 kV Station	\$ 10.0 M	3 terminations
Additional 345 kV termination	\$ 3.0 M	
Greenfield 115 kV Station	\$ 3.0 M	3-terminations
Additional 115 kV termination	\$ 1.0 M	



NM Subgroup

NM Wind Concepts

http://www.oatioasis.com/PNM/PNMdocs/New_Mexico_Transmission_Expansion_For_Wind_Resources_Ver_3.pdf



Prepared
By

