



NM Subgroup

SWAT Oversight Committee NM Subcommittee Update August 2010

Tom Duane

PNM Transmission/Distribution Planning and Contracts





NM Subgroup

August 12 Conference Call

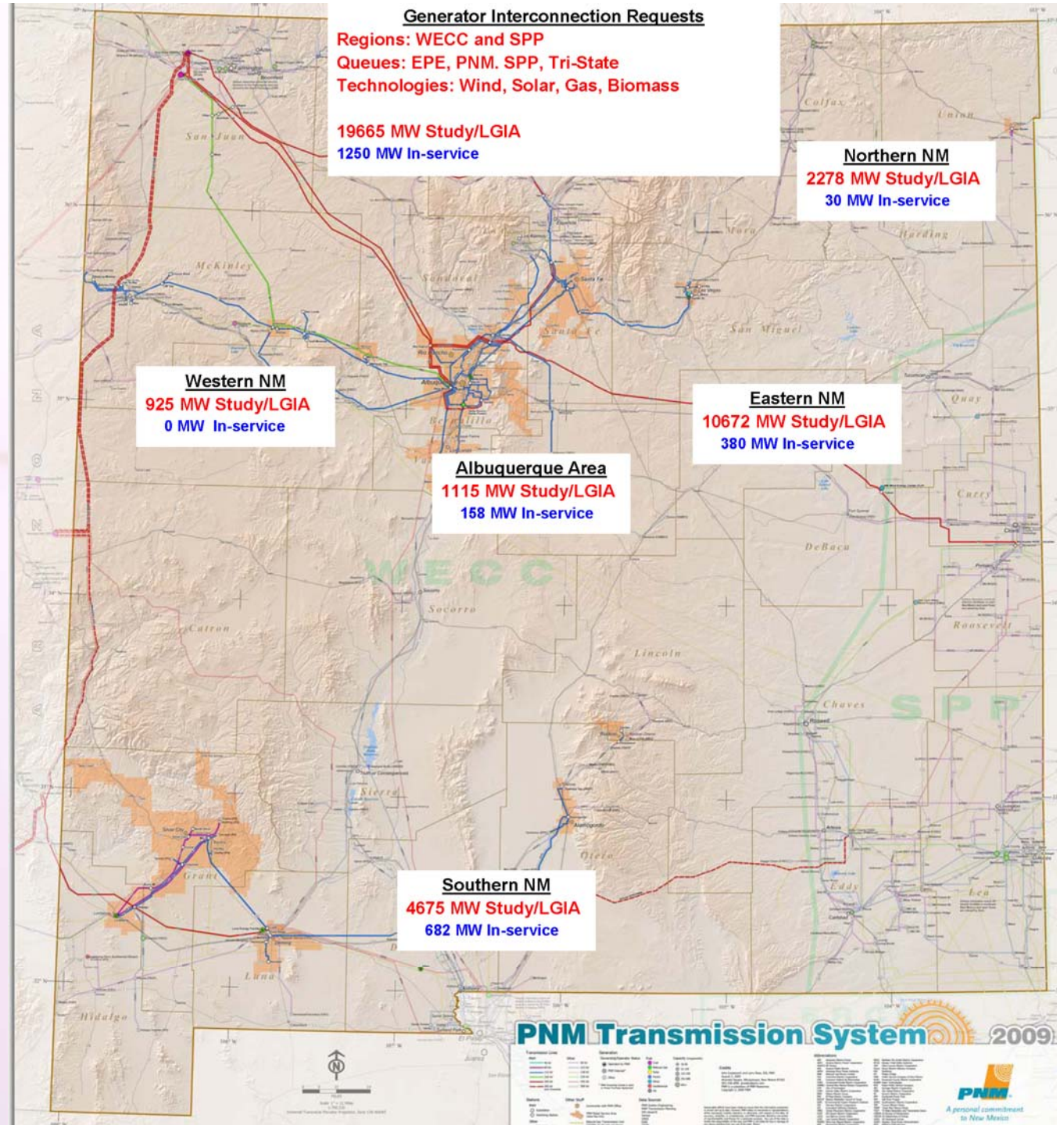
- **Update of Generation Interconnection Request Totals**
- **Update on NM Regional Transmission**
- **Collector System Review**
- **NM State Activities**
 - **RETA Corridors**
 - **Governor's Task Force**
- **NERC Compliance Activities**
 - **Utility 10-Year Plans**
 - **MOD-001/MOD-029**





NM Subgroup

Interconnection Request Summary





NM Subgroup

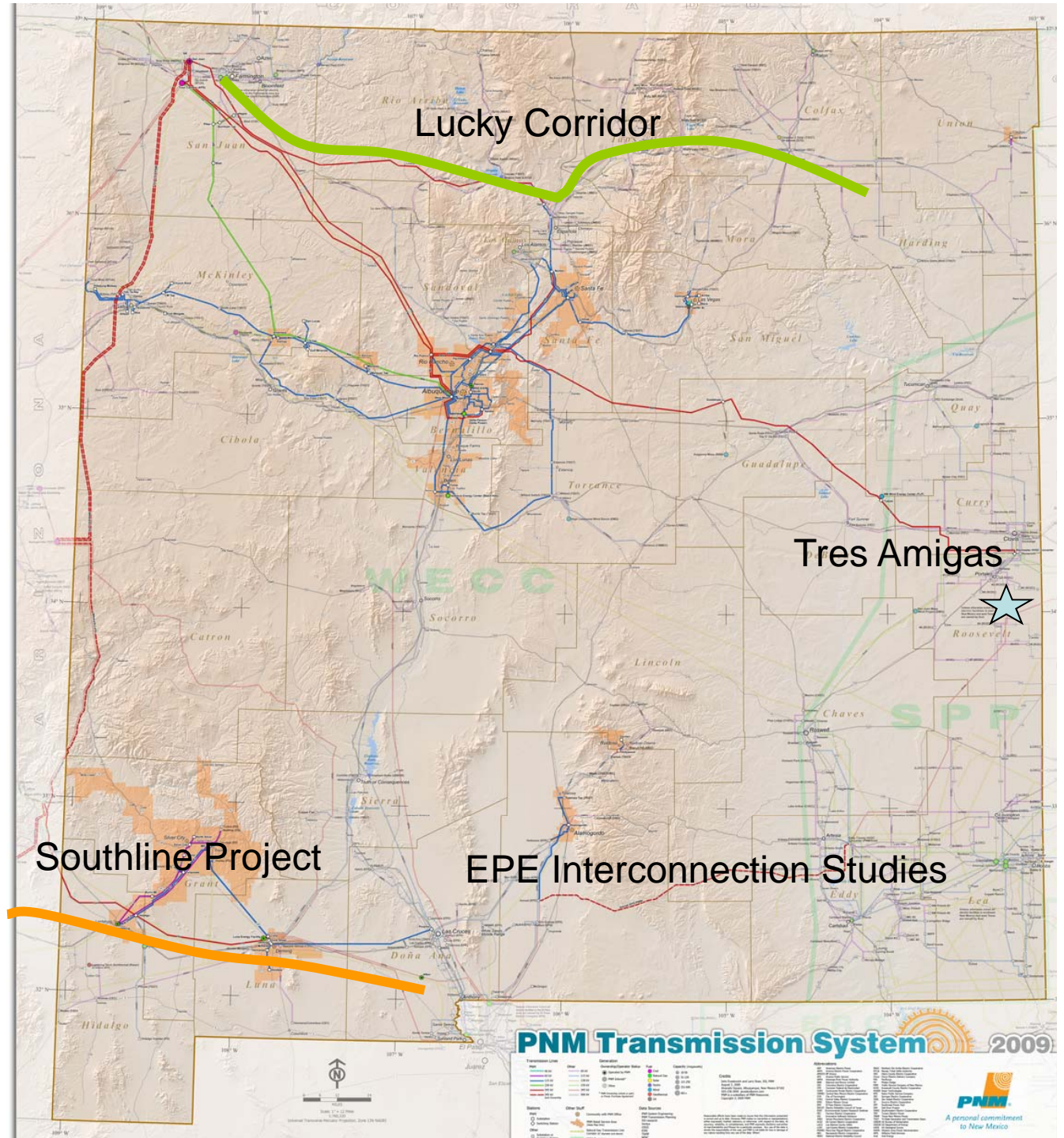
Proposed Renewable Transmission

- High Plains Express
 - Link: High Plains Express Transmission Project
- Sunzia
 - In WECC Phase II Rating Process
 - Draft EIS Tentatively Q1 2011
 - Link: SunZia
- Tres Amigas
 - Link: Tres Amigas
- Santa Fe Project
 - Link: Santa Fe « Clean Line Energy
- Southline Project (studies in SATS)
- Lucky Corridor
- EPE Cluster Feasibility Study Posted
 - Link: Generator Interconnection Cluster Study - 345 KV Feasibility





NM Subgroup



PNM
A personal commitment
to New Mexico



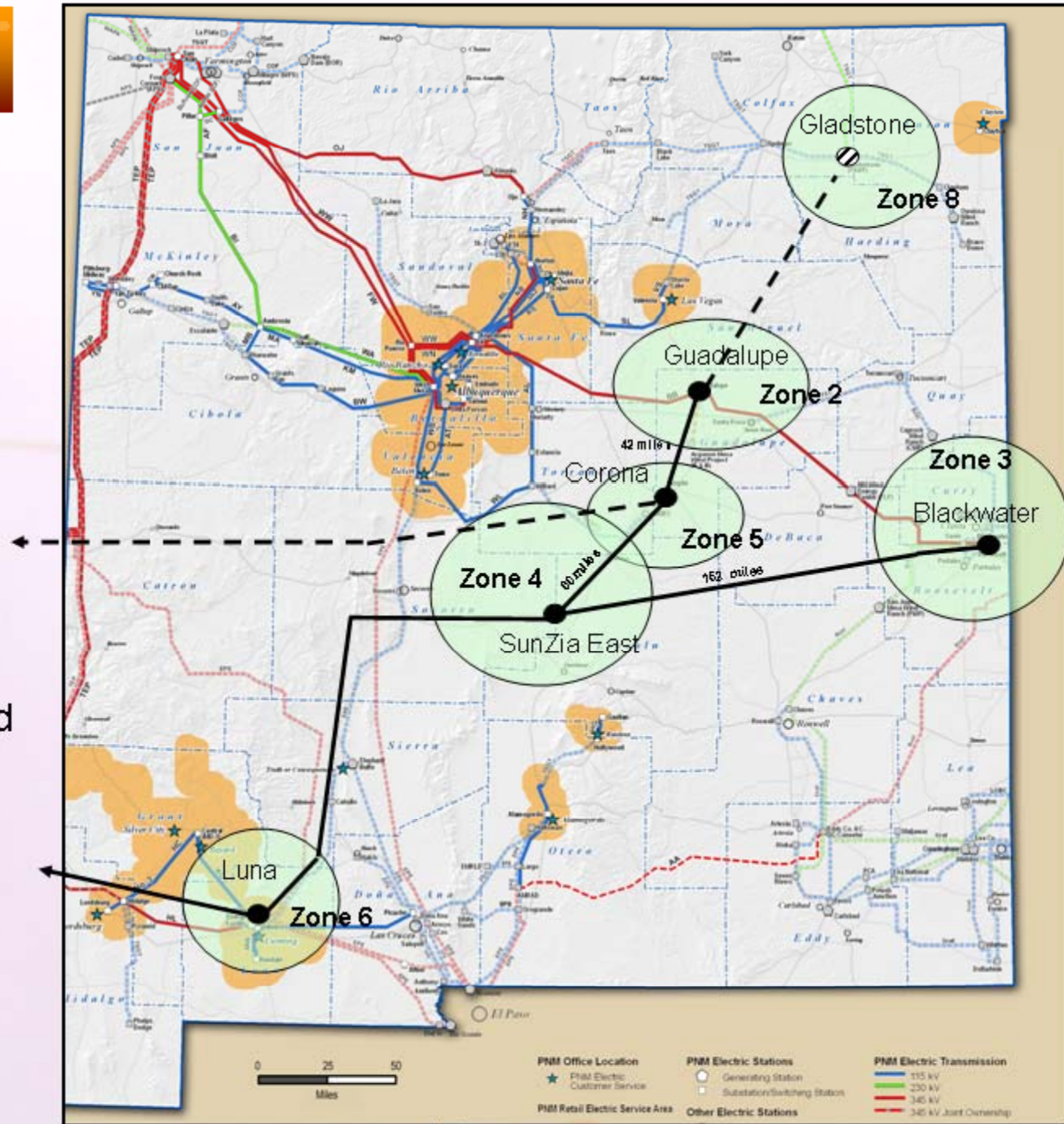
Collector System Review

- **Scope: Generally no new input.**





February Draft One-Line of Potential Collector System for Study





NM Subgroup

RETA Draft Corridors

- TCC presentation on June 11 in public meeting.
- Included information on RETA proposed corridors for renewable transmission additions.
- Comments compiled and presented June 28. Comments received from approximately 16 stakeholders.
- Website: <http://www.nmreta.org/>





NM Subgroup

Governor's Transmission Planning Task Force

- 24 Member Panel Task Force Appointed with First Meeting Held Aug 2.
- Mission: Assist RETA in creating a a blueprint of New Mexico's future renewable energy transmission system
 - Address financing and cost recovery
 - Identify potential projects
 - Identify steps needed to grow the statewide electricity transmission grid
 - 5-year, 10-year, and 20-year planning horizon.
- Comprises public utilities, environmental experts, land owners, professionals from the renewable energy generation sector and other stakeholders
- Recommendations of Task Force due Nov 4





NERC Compliance Activities

- Utility 10-Year Plan Updates
- MOD-001, MOD-029 activities for jointly owned transmission paths – may impact posted path capability and posted ATC





NM Subgroup

Questions / Discussion



SWAT Meeting, Denver, CO
August 17, 2010

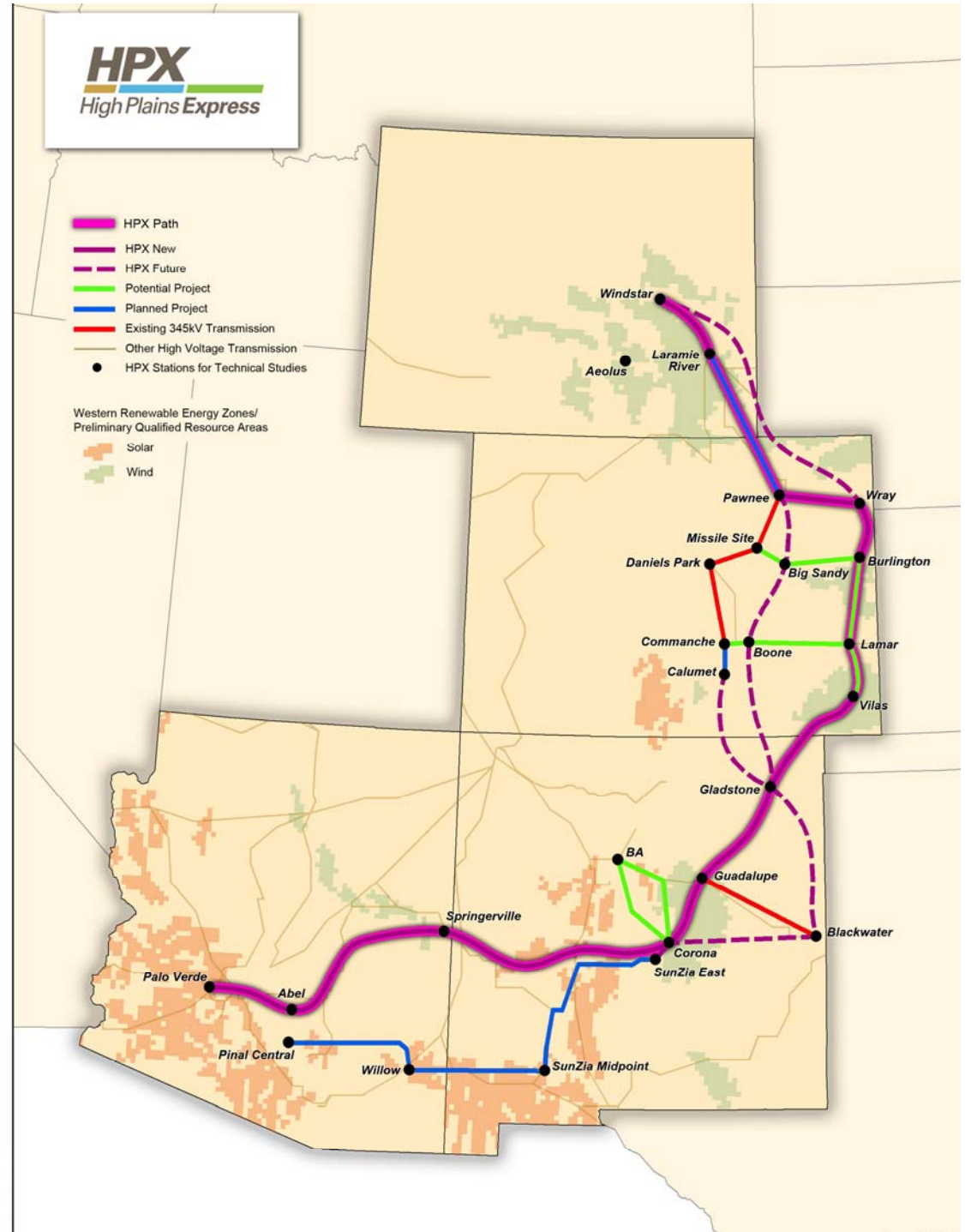
Slide 11

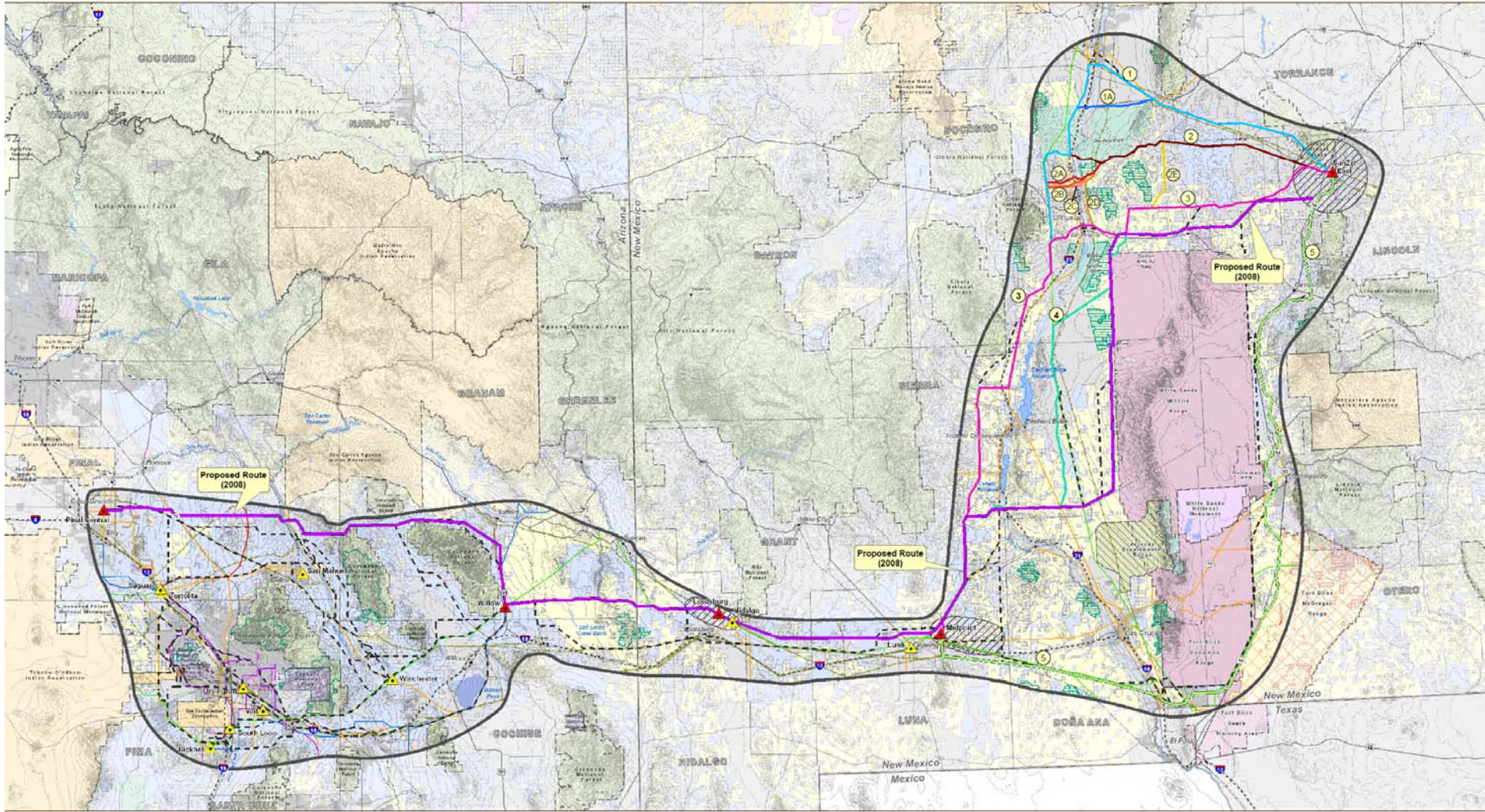


NM Subgroup

Potential HPX Configurations

- 345 kV or 500 kV
- Single or double-circuit
 - One or two corridors
- Phased development
 - Progressive: increasing capacity from north to south
 - Staged: 500 kV operated at 345 kV
 - Segmented: Potential for “stranded” segments





SunZia Southwest Transmission Project

Land Ownership and Jurisdiction



LEGEND

Land Ownership

Bureau of Land Management	U.S. Fish and Wildlife Service
U.S. Dept. of Defense	U.S. Bureau of Reclamation
McGregor Range Withdrawal	Indian Reservation
National Park Service	State Trust Land
U.S.D.A. Forest Service	Local or State Parks
U.S.D.A. Other	Private/Other

Base Features

Project Features

SunZia Proposed Route - Sept. 8, 2008	Study Area - April 2010
Alternative Route Segments	Substation Siting Area

Alternative Routes - Midpoint to SunZia East

1	2B	3
1A	2C	4
2	2D	5
2A	2E	

Utilities

Proposed Substation	500kV Transmission Line
Existing Substation	345kV Transmission Line
Pipeline (Diameter 6'*)	230kV Transmission Line
	138kV/116kV Transmission Line
	116kV Transmission Line

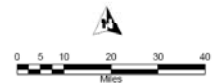
Reference Features

City	State Highway
River/Stream	U.S. Highway
Lake/Reservoir	Interstate
Urban Area	Railroad

County Boundary
State Boundary
Jurisdictional Boundary
Wilderness Area
Wilderness Study Area (WSA)

Sources:

AZ BLM 2009
 AZ State Land Department and ALRIS 2008
 ESRI StreetMap 2006, Mombasa RMP 1989
 NM BLM 2005, Socorro FRMP 2009
 Tri-County RMP 2009
 POWERmap, powermap.platts.com
 ©2009 Platts, a Division of the McGraw-Hill Companies
 USGS, EPG, Inc. 2010



May 12, 2010



Santa Fe



0 100 200 400 600 800 Miles

CLEAN LINE
ENERGY PARTNERS



Sources: Platts, TIGER, ESRI, National Atlas