

ColumbiaGrid Planning

August 2011



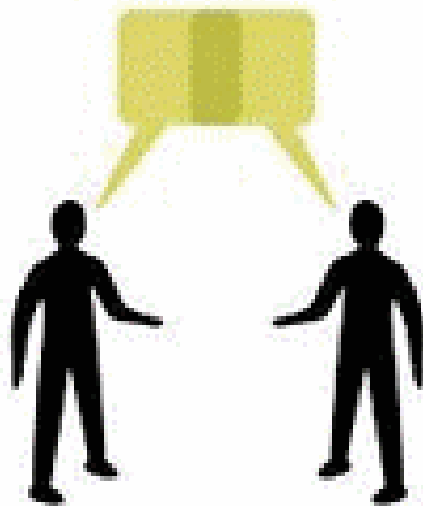


ColumbiaGrid Planning

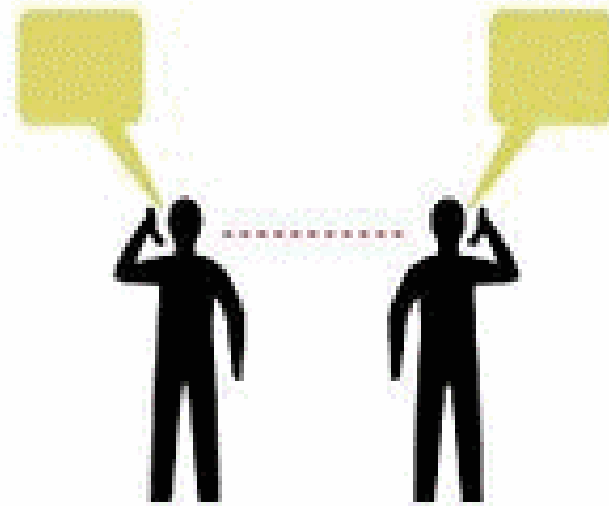
- Independent staff of six
 - Jeff Miller, Marv Landauer, Gordon Comegys, Amy Johnson, Jonathan Young, Tammy Beckwith
- Independent 3 member Board –
 - Ed Sienkiewicz, Shelly Richardson, and Jim Miller
- Anyone can participate - Open stakeholder process
- Develops Biennial Transmission Expansion Plan which builds on an annual System Assessment
- Conducts studies focused on specific issues (e.g., Puget Sound area plan, Mid-C Area Plan, Centralia closure, wind integration, cross-Cascades)
- Can make cost allocation recommendations

ColumbiaGrid fosters **collaboration**

Not just Coordination



Collaboration



Coordination

ColumbiaGrid Planning Funding

- Funded by Entities that have signed the ColumbiaGrid Planning and Expansion Functional Agreement
 - Funders must either operate a transmission or distribution system or have a legal obligation to engage in transmission planning in the Pacific Northwest
 - Funding responsibility varies based on the entities relative amount of transmission and load



Current Funders

- Avista Corporation
- Bonneville Power Administration
- Chelan County PUD
- Cowlitz County PUD
- Douglas County PUD
- Grant County PUD
- Puget Sound Energy
- Seattle City Light
- Snohomish County PUD
- Tacoma Power
- Tonbridge Power

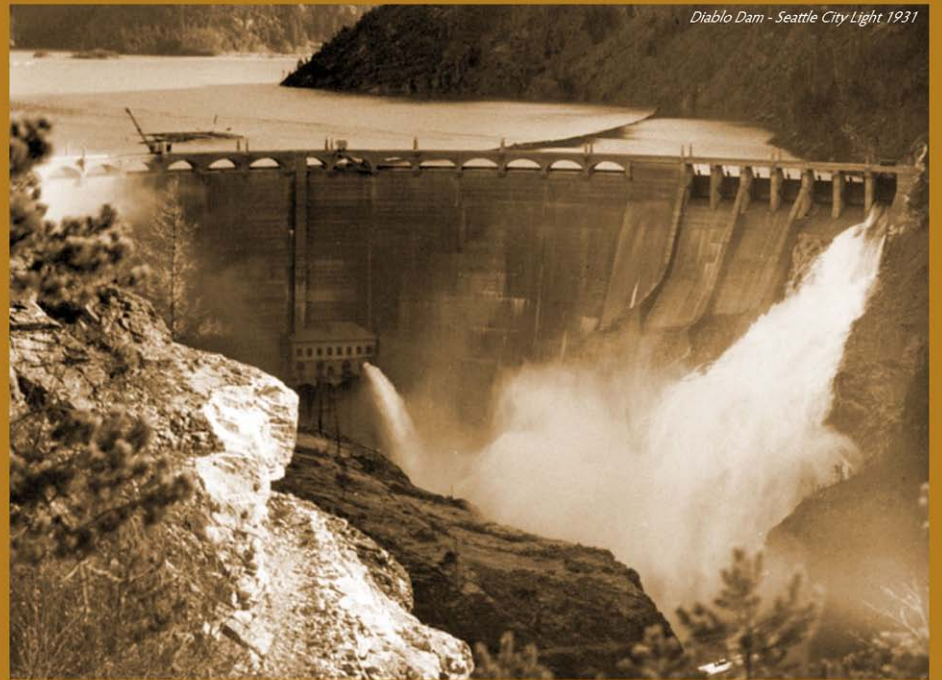
System Assessments

Completed each year
to assess the systems
ability to meet
NERC TPL requirements

Normally available
each year in July



2011 System Assessment





Public Review Draft

2011 Biennial Transmission
Expansion Plan



Biennial Plans

Completed every other
year with updates
in the off years

Normally final draft is
available in December
with Board approval
in February



Miscellaneous Information

- Main planning group normally meets about every other month
 - Forms and dissolves Study Teams, Sets schedules, reviews reports, identifies issues, receives updates, exchanges information, etc.
- Interested parties sign up for notices of activity via the website
- Base cases are shared with any WECC member
- CEII and base cases are kept in secure area of website
 - Requests for access to CEII are reviewed and approved by CG management
- Coordinates economic study requests to WECC
- Performs the Northwest Area Coordinator function

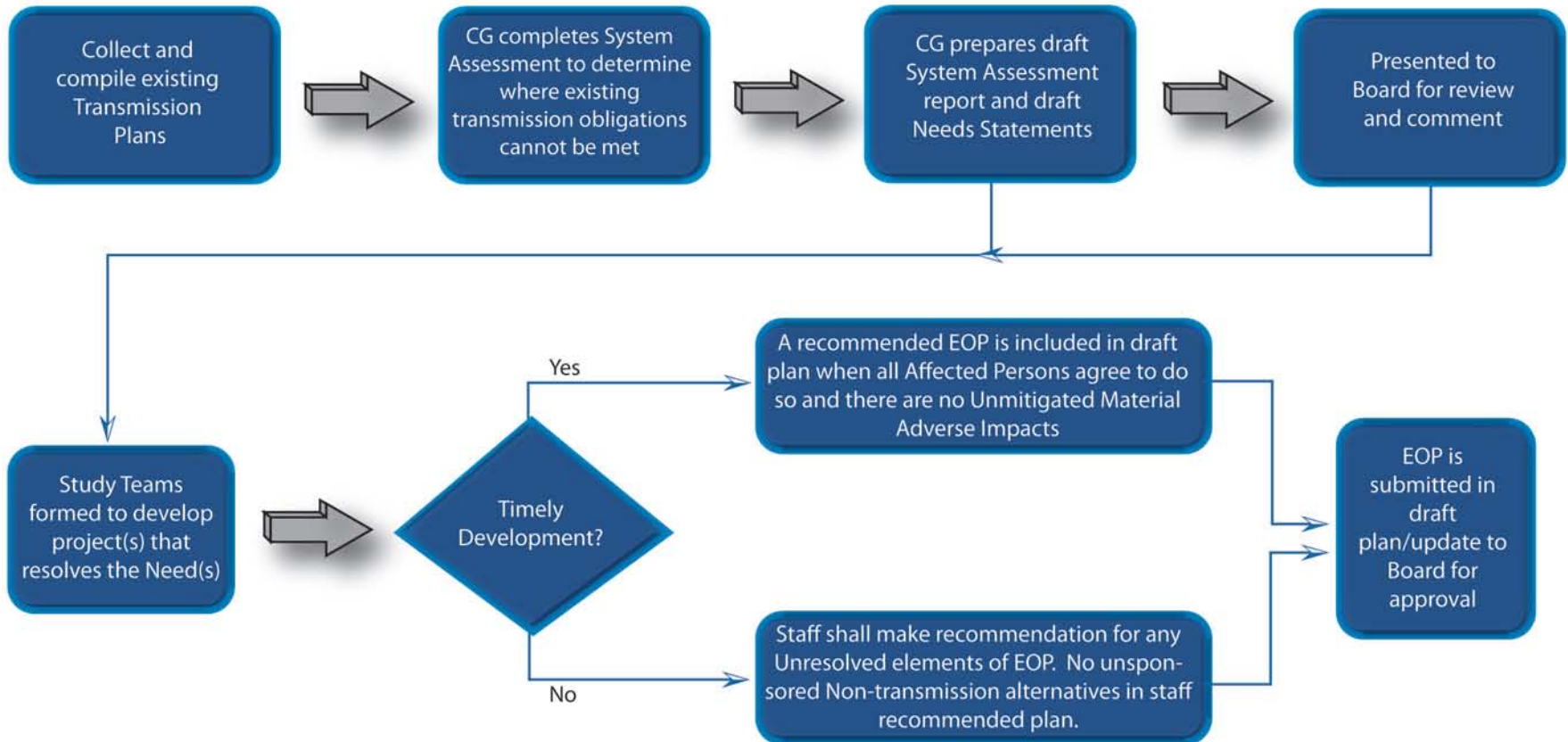


Projects are Processed Differently Depending on Type

- Existing Obligation Project
 - Reliability upgrade
- Requested Service Project
 - Generator interconnection or transmission service request
- Capacity Increase Project
 - Economic project
- Single System Project
 - Only affects one ColumbiaGrid Participant
- Expanded Scope Project

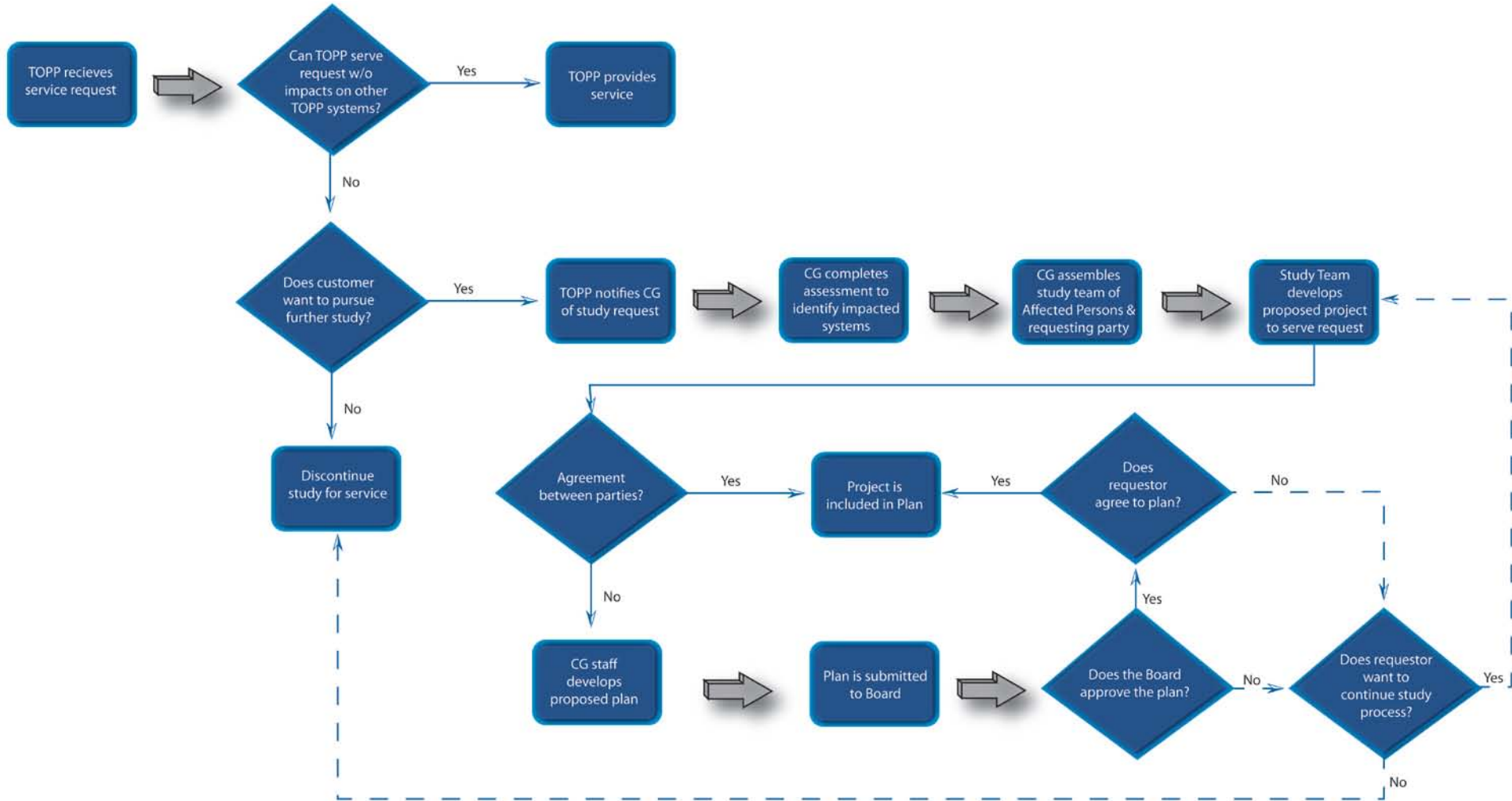


Existing Obligation Project





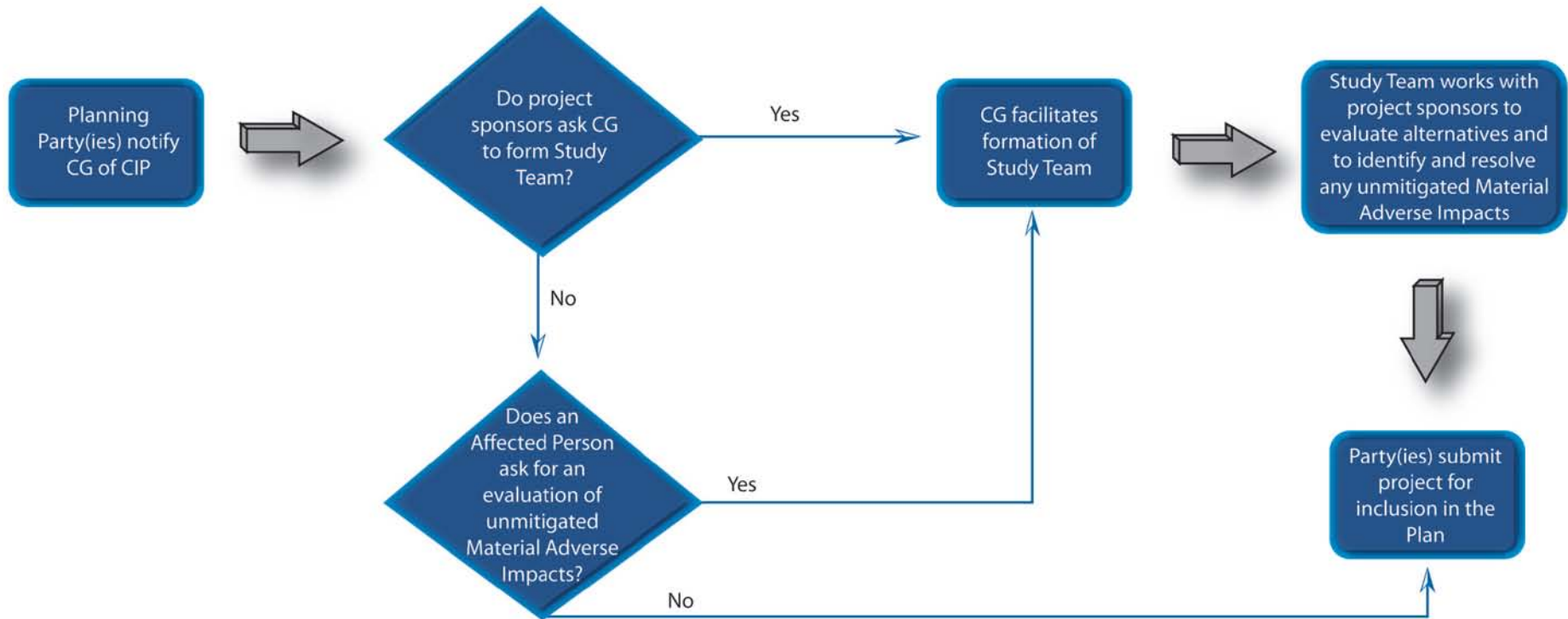
Requested Service Project



Note: dotted line is outside of the language of the agreement but it is not excluded from occurring

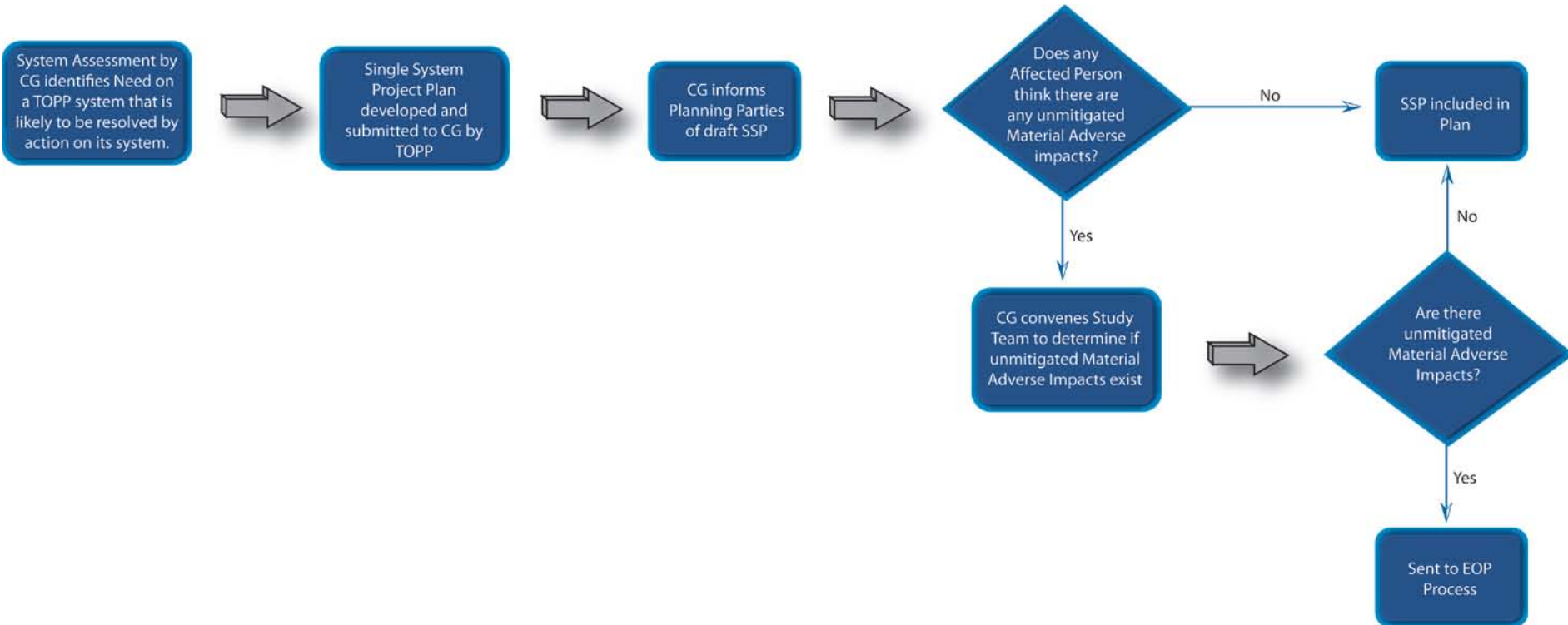


Capacity Increase Project



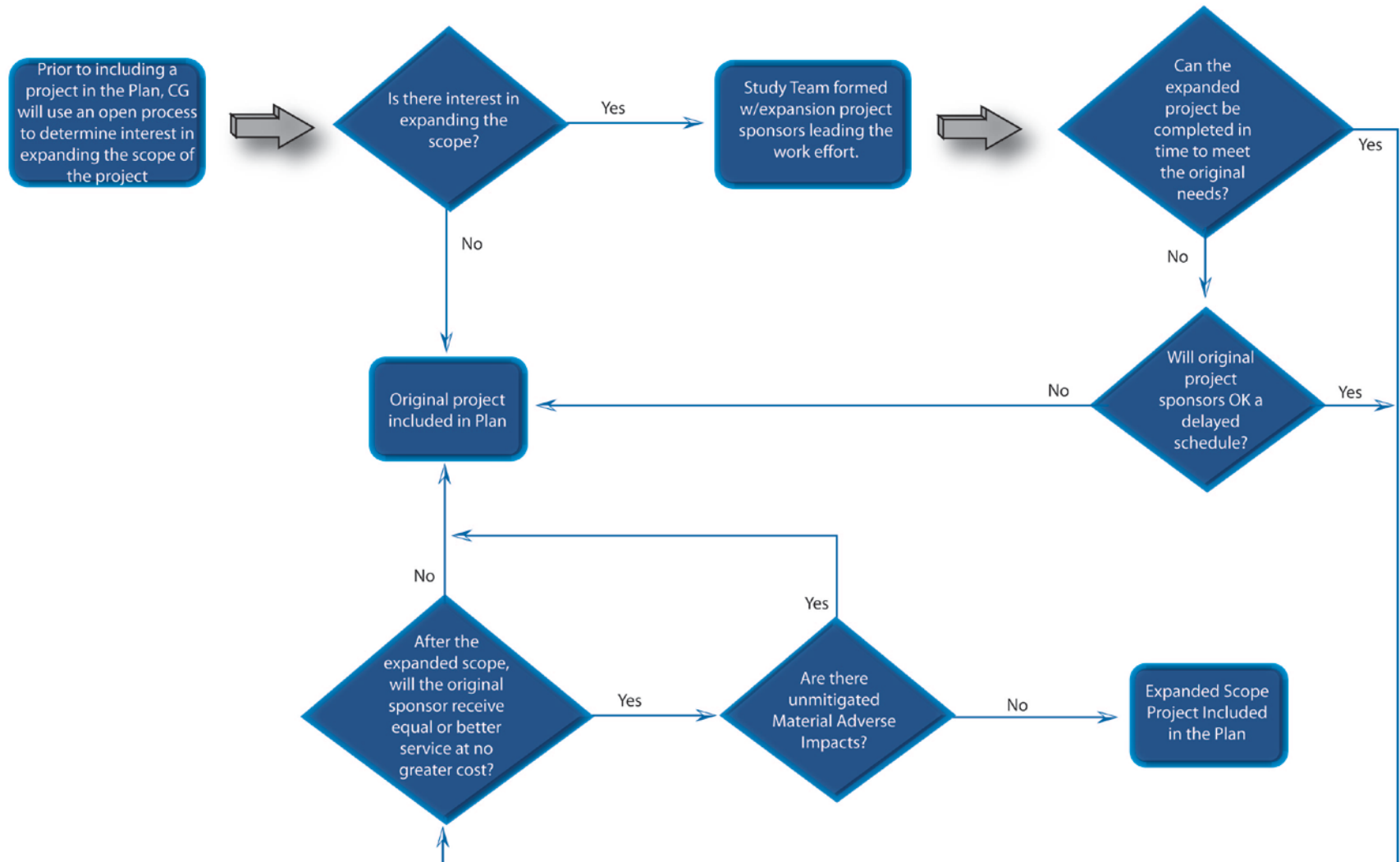


Single System Project





Expanded Scope Project



Information Required in Biennial Plan

	Existing Obligation Project	Requested Service Project	Capacity Increase Project	Single System Project
Material Adverse Impacts	X	X	X	X
Plan of Service	X	X	X	
Estimated Cost	X	X	X	
Schedule	X	X	X	
Reason for Project	X	X	X	X
Cost Allocation	X	X		
Transmission Capacity Allocation	X	X		
Transmission Rights Allocation			X	
Expected amount of new Capacity			X	
Persons making Modification	X			
Ownership Allocation		X		
Persons Responsible for Costs and Construction			X	
Owners and Operators			X	

ColumbiaGrid Role in Cost Allocation

	Existing Obligation Project	Requested Service Project	Capacity Increase Project	Expanded Scope Project	Single System Project
ColumbiaGrid Staff develops cost allocation recommendation among TOPP's if Affected Persons cannot reach agreement.	X	X			
ColumbiaGrid can allocate costs to another TOPP based on the ability of the project to meet a Need on a TOPP's system. The amount allocated may not exceed the cost that the TOPP would have occurred if it had met that Need with its own project. No other project benefits may be considered (e.g., a decrease in losses)	X	X			
ColumbiaGrid develops a cost allocation if requested by a Planning Party			X		
ColumbiaGrid is free to consider all impacts and benefits from the project in developing the cost allocation			X		

<u>Board Actions</u>	Recommended Existing Obligation Project	Staff Recommended Existing Obligation Project	Recommended Requested Service Project	Staff Recommended Requested Service Project	Capacity Increase Project	Expanded Scope Project	Single System Project
Finding of no unmitigated Material Adverse Impacts	May approve Study Team finding	May approve Study Team or Staff finding	May approve Study Team finding	May approve Study Team or Staff finding	Note impacts, which are left for WECC process to resolve	May approve Study Team finding	
Cost allocation if Affected Persons do not agree		May approve Study Team or Staff finding		May recommend allocation			
Project meets Need	May approve Study Team finding	May approve Study Team or Staff finding					
Project serves transmission service request			May approve Study Team finding	May approve Study Team or Staff finding			
Project meets underlying Need or request without higher cost than original project						May approve Study Team finding	
Transmission allocation		May approve Study Team or Staff finding		May approve Study Team or Staff finding			
Plan of Service		May approve Study Team or Staff finding		May approve Study Team or Staff finding			
Sponsorship		May approve Study Team or Staff finding		May approve Study Team or Staff finding			
Schedule		May approve Study Team or Staff finding					
Items Board may modify if supported by record		Cost allocation or transmission allocation		Cost allocation or transmission allocation			

A photograph of a modern building with a prominent curved glass facade. The building is surrounded by greenery, including trees and bushes. A paved area, possibly a driveway or walkway, is visible in the foreground. The overall scene is bright and clear.

Questions?