



Southwest Area Transmission (SWAT) Study Group

***Arizona Renewable Resource and  
Transmission Identification Subcommittee (ARRTIS)  
Meeting #3***

Thursday, March 5<sup>th</sup>, 2009  
1:30 p.m. - 3:30 p.m.

Arizona Public Service  
Ocotillo Power Plant Service Center  
1701 E. Rio Salado Parkway  
Tempe, AZ 85281

---

Agenda

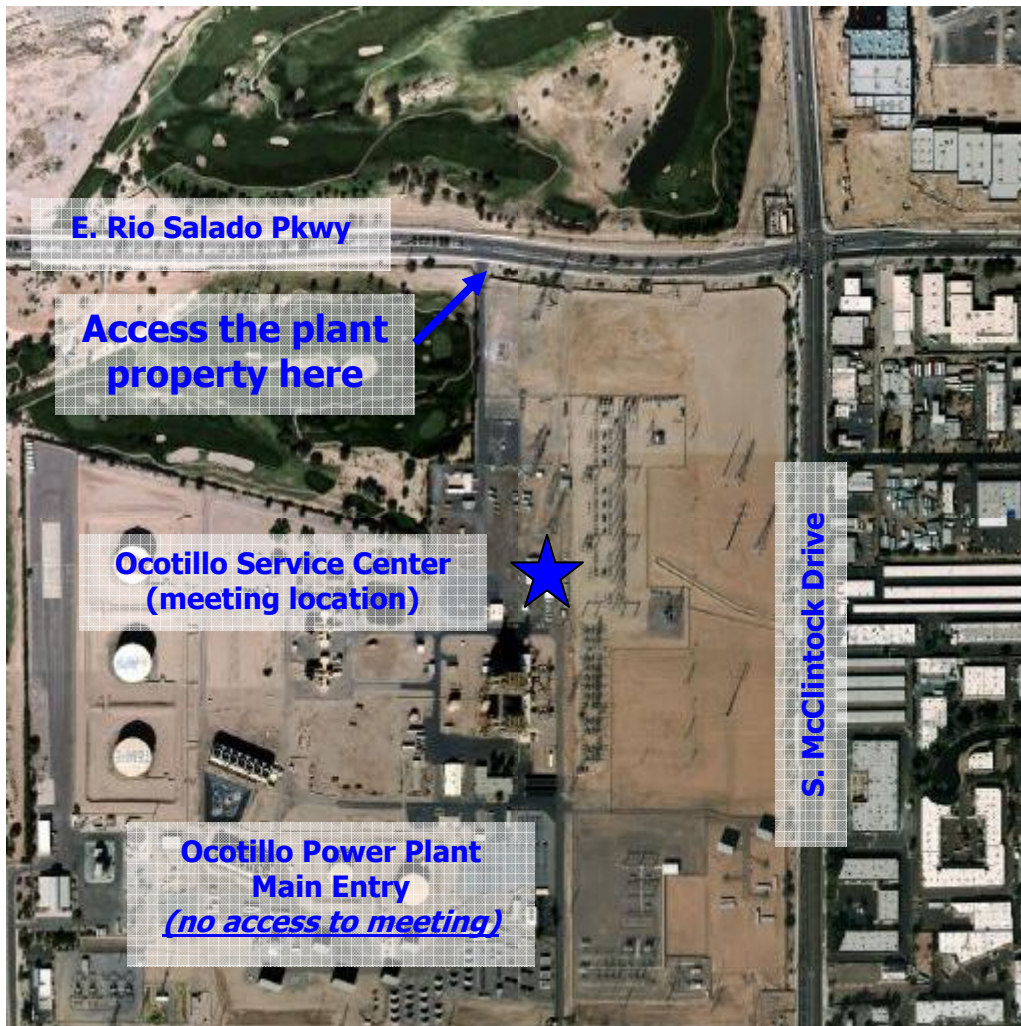
- I Participant introductions
- II Overview of Meeting #2 and review of any action items
- III Review of applicable Arizona constraint criteria and map layers identified in the WREZ process
- IV Presentations on land management policy related to renewables from federal and state representatives
- V Discussion of exclusion and high-sensitivity/avoidance criteria for Arizona
- VI Next steps and action items
- VII Questions/comments

## Accessing the Ocotillo Service Center / Electric Construction Operations Facility

The meeting location is the Service Center / Electric Construction Operations Facility at the Ocotillo Power Plant in Tempe, Arizona. **Please note that there is no access to the meeting facility through the main plant entry on University Drive.** The entrance driveway to the meeting facility is located on the south side of East Rio Salado Parkway, just west of the intersection of Rio Salado and McClintock. Along the entrance driveway, there is a chain link security gate labeled by a **green sign** that says:

**1701 E. Rio Salado  
Electric Construction Operations**

If arriving from McClintock Drive, you have gone too far along E. Rio Salado if you come to Pier Drive.



## Security and Parking

**It is mandatory that you RSVP to attend the meeting so that Security can allow you access to the facility.** We will attempt to have an APS employee at the security gate to assist with guest access. If there is no one at the gate when you arrive, you will be required to contact APS Security by lifting the receiver on the security phone and providing your name to the attendant.

Once on the APS property, proceed north and park in the paved parking area. Please note the restrictions on private vehicle parking immediately adjacent to the building. The meeting facility is the large low-profile building and will be marked with an ARRTIS meeting sign by the main entry. The meeting will be in the Sun Training Room.