

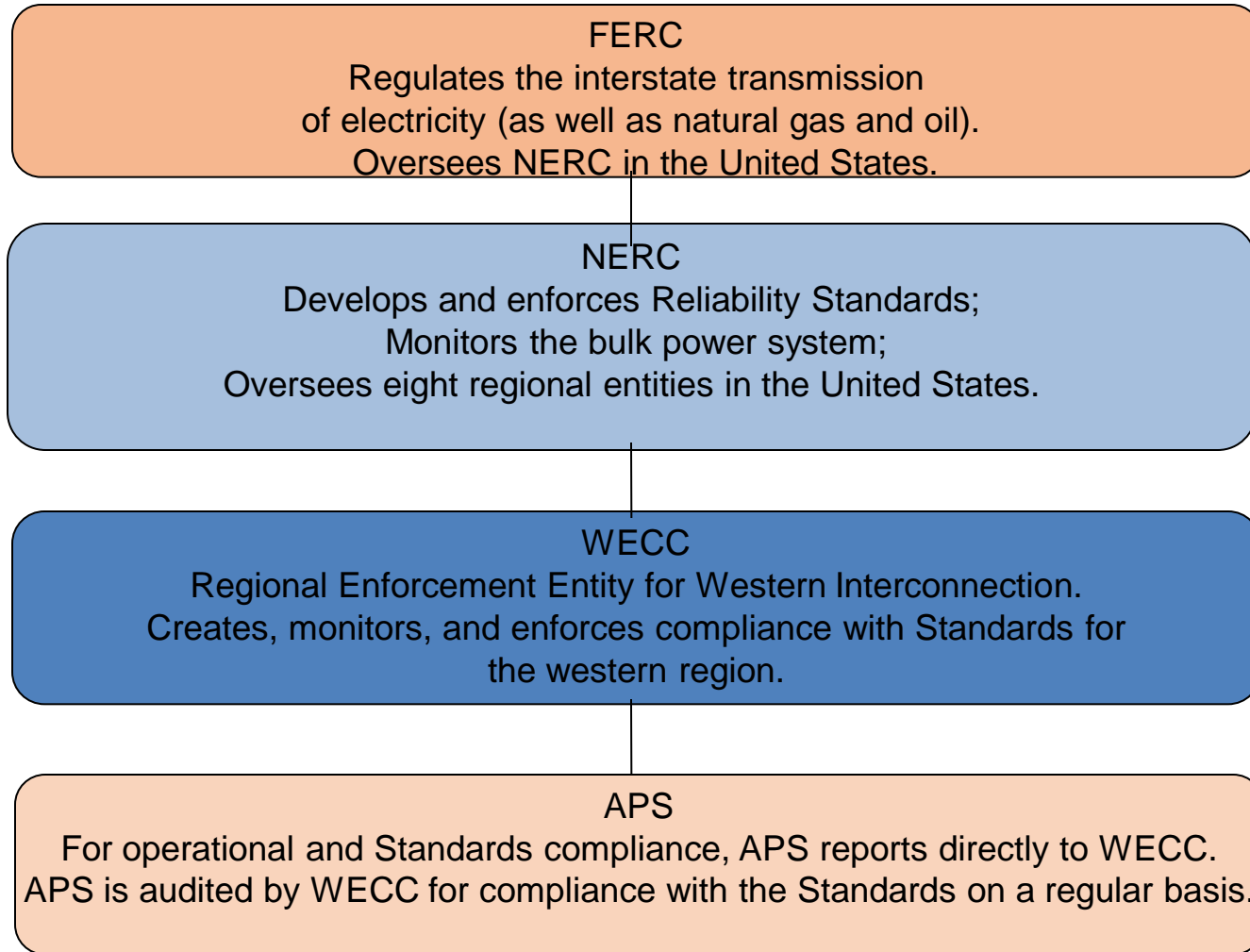
NERC / WECC COMPLIANCE

John Lucas

Manager Transmission & Distribution Planning, APS



Federal and Regional Regulators



Electric Reliability Standards

- Supports safe, reliable operation of “Bulk Electric System” (BES) / 100 kV and up
- Mandatory compliance with NERC Reliability Standards (June 18, 2007 enforcement date).
- Approximately 103 approved Standards & 1200 Requirements and Sub-Requirements
- Compliance with the Standards is **Mandatory!**

Failure to comply can subject entity to:

- Fines up to \$1 million per day/per occurrence
- Increased regulatory scrutiny
- Public scrutiny

WECC Monitoring Processes

Eight processes are used to monitor an entity's compliance with the Standards:

- Compliance Audits - A systematic, objective review and examination of records and activities to determine whether a Registered Entity meets the requirements of applicable Reliability Standards
- Self-Certifications - Statement by a Registered Entity of compliance or non-compliance with Reliability Standards
- Spot Checks - Check of compliance with individual standards
- Compliance Violation Investigations - Comprehensive investigation
- Self-Reporting - Registered Entity reports violation immediately upon discovery
- Periodic Data Submittals – Quarterly and/or monthly reports
- Exception Reporting - Reports submitted only when a violation has occurred
- Complaints - Individual or company notifies NERC or WECC of suspected non-compliance

Standards Applicable to PA, TP

FAC-002

NUC-001

FAC-010

FAC-012

PRC-010

FAC-013

PRC-015

FAC-014

MOD-004

TPL-001

MOD-010

TPL-002

MOD-012

TPL-003

MOD-016

TPL-004

MOD-017

MOD-018

MOD-019

MOD-020

MOD-021

Additional MOD Standards Awaiting FERC Approval – (MOD) 001, 004 & 029