



Renewable Energy Systems

Powering tomorrow's world

INTRODUCTION

- Introducing Renewable Energy Systems
- China Mountain Wind Energy Project

Renewable Energy Systems (RES)

- Renewable Energy Systems (RES) is one of the fastest growing wind development companies in the world and has been at the forefront of the wind industry since it was founded in 1982
- RES has a long history of developing, constructing and owning wind projects. RES has constructed 62 operational wind projects with a capacity of more than 2,500 MW around the world and has an additional 1,540 MW under construction and is currently doing business on four continents.
- RES has been active in North America since 1997 under the name of RES America Developments, Inc. and during this time has either developed or constructed over 12% of the installed capacity in the United States.
- RES Americas developed and built the Hopkins Ridge, Marengo I & II wind energy project in SE Washington for a total of 330 MW in the Pacific Northwest
- North-American headquarters is in Broomfield, CO with additional development offices in Minneapolis, Portland, Austin, and Montreal.

RES Offices & Principle Subsidiaries

- RES AMERICAS INC
- RES SKANDINAVIEN
- RES LTD.
- EOLE-RES



RES AMERICAS

- Areas Of Expertise Include
 - site prospecting
 - land procurement
 - wind resource assessment
 - wind project design
 - permitting process
 - managing environmental studies
 - community relations
 - transmission and interconnection work
 - power marketing and contracting.
- One Stop Shop with all the resources in house to develop, finance, build and operate a wind farm.

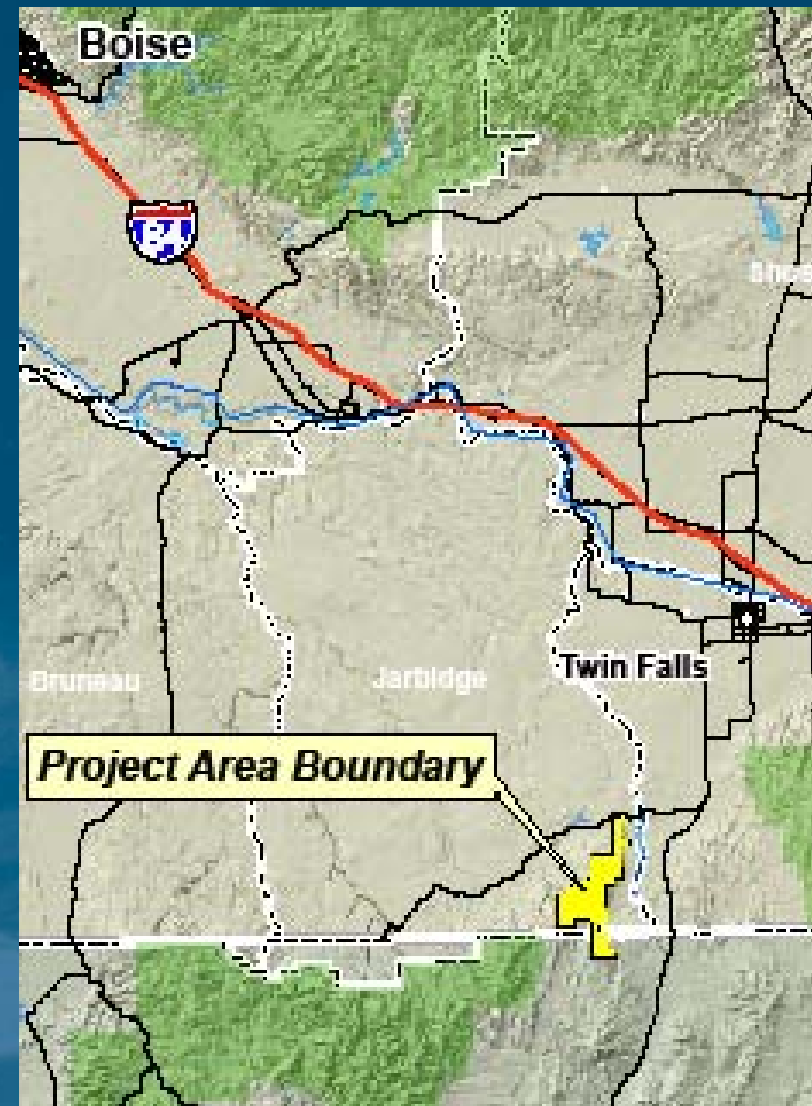


64MW Nine Canyon project, WA
Completed December 2005

China Mountain

- RES is proposing to develop a 425 megawatt (MW) wind energy facility

- The project area covers approximately 30,700 acres in the Jarbidge Foothills, southwest of Rogerson, Idaho and west of Jackpot, Nevada.
- The proposed project area includes public land administered by the BLM Elko District, Wells Field Office in north eastern Nevada, public lands administered by the BLM Twin Falls District, Jarbidge Field Office, and State of Idaho and private lands in south-central Idaho.
- The area is currently used for recreation purposes and multiple grazing leases occur on the lands managed by the Bureau of Land Management and Idaho Department of Lands.
- The project will have minimal impact on grazing and recreation. Current public access to the area will be maintained.



China Mountain

- Up to 185 wind turbines, each having a generating capacity between 2.3 and 3.0 MW, would be installed depending on final layout, design, accessibility and permitting.
- The turbines proposed for the project would have tower heights ranging from 200 to 250 feet and rotor diameters ranging from 250 to 300 feet.
- Turbines would be connected by underground electrical cable to one or two substations.
- Each substation would be sited on a 2-acre area and would consist of a gravelled, fenced area containing transformer and switching equipment.
- The proposed project would disturb up to 540 acres on a temporary basis and up to 180 acres on a permanent basis, following reclamation of construction disturbance.
- The proposed project would operate year round for a minimum of 30 years.
- Project will be built in phases, first phase estimated at 200 MW.

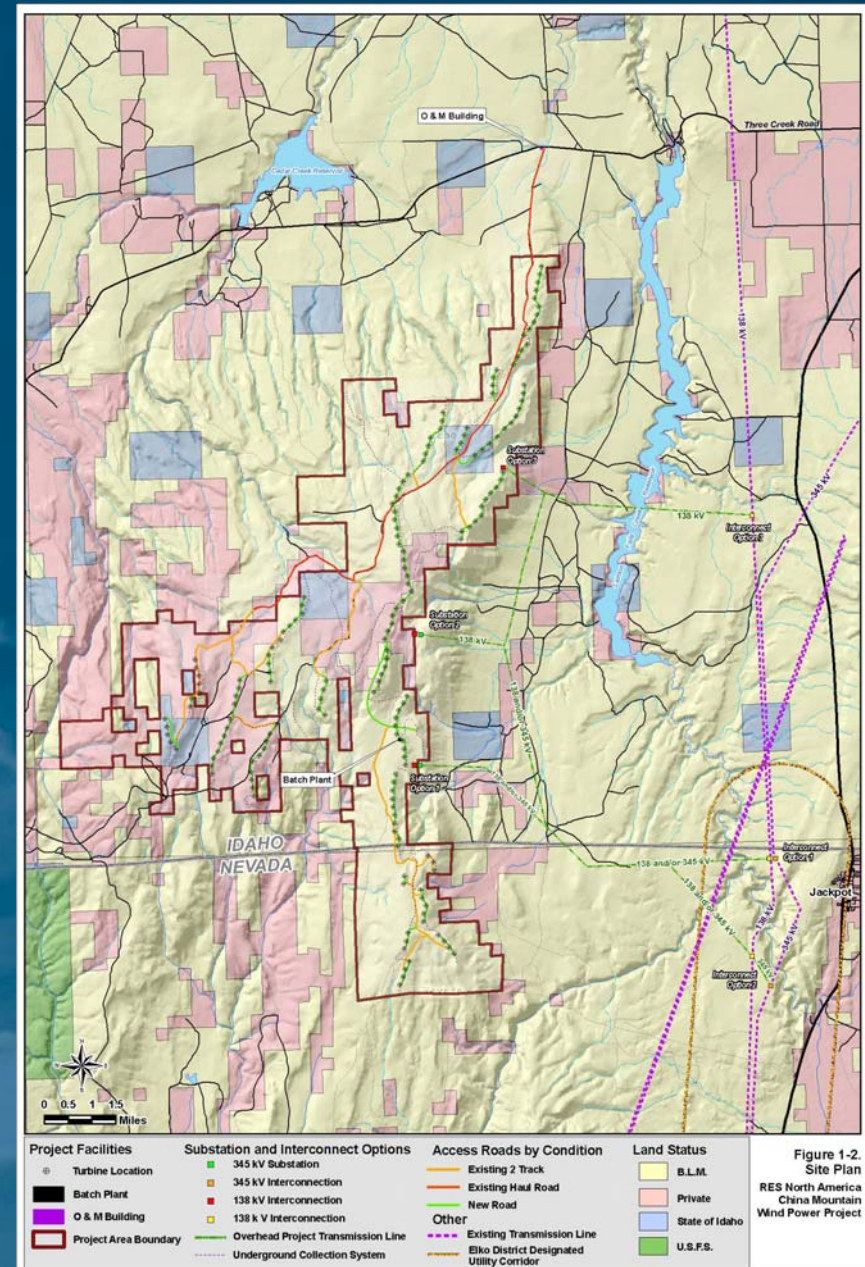


Figure 1-2. Site Plan
RES North America
China Mountain
Wind Power Project

China Mountain

- Potential environmental impacts will be reviewed by the BLM through preparation of an Environmental Impact Statement, under the National Environmental Policy Act.
- Federal Register Notice of Intent was filed on Monday April 21, 2008 by the BLM
- The EIS process will include several public filings and open meetings. Reviewing, permitting and public review process estimated to take 18 to 24 months
- RES is working with the US Fish and Wildlife Service, Idaho Department of Fish and Game and Nevada Department of Wildlife to address concerns over sensitive species such as sage grouse and raptors.
- RES has also met with the Shoshone Paiute Tribe to address concerns over impacts to Native American cultural sites and resources.



205 MW White Creek Wind Farm Roosevelt, Washington completed 2007

Interconnection

- Interconnection at Sierra Pacific Humboldt – Midpoint 345 kV
- Interconnect Feasibility Study Agreement July 2007
- Interconnection System Impact Study February 2008
- Interconnection Facilities Study Agreement Initiated March 2008



Utility Partnership

- Electricity generated from the Project can be delivered to utilities in both Idaho and Nevada and we are pursuing all power marketing opportunities.
- RES and Nevada Power Company have executed an agreement to jointly develop the project.
- It is anticipated that Nevada Power Company will jointly operate the project with RES and would receive the first 200 megawatts of power production.
- Additional power from the wind farm could be made available for utilities in Idaho and other states.
- Commercial operation for the first 200 MW is expected in 2010 - 2011.



140 MW Marengo I project, WA Completed December 2007